

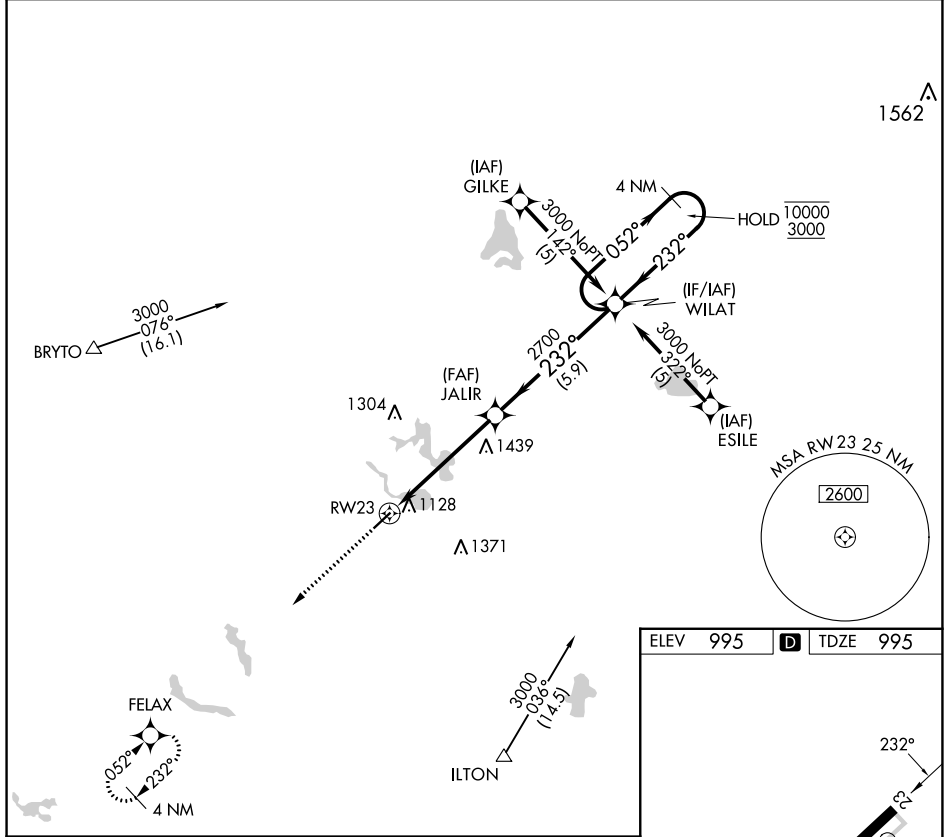
APP CRS	Rwy Idg	4000
232°	TDZE	995
	Apt Elev	995

RNAV (GPS) RWY 23

TRI-STATE STEUBEN COUNTY (A.N.Q.)

RNP APCH.	<p>MISSED APPROACH: Climb to 3000 direct FELAX and hold.</p>
<p>▼ Rwy 23 helicopter visibility reduction below 1 SM NA. Procedure NA at night.</p>	

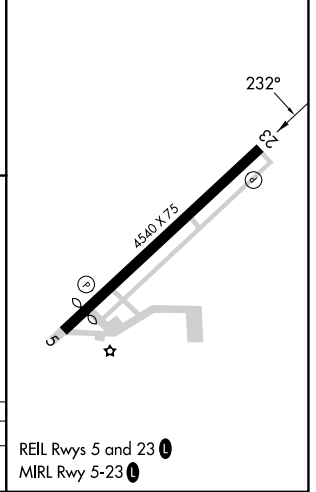
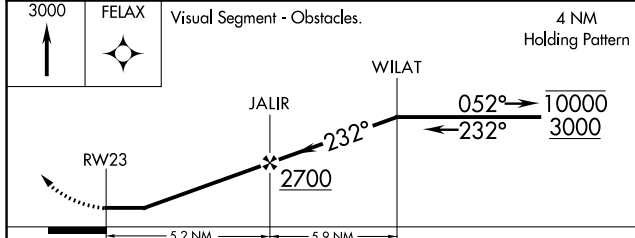
AWOS-3 118.175	FORT WAYNE APP CON 127.2 284.6 (SW/NW) 132.15 284.6 (SE/NE)	UNICOM 123.075 (CTAF) ①
--------------------------	---	--



EC-2, 13 JUN 2024 to 11 JUL 2024

EC-2, 13 JUN 2024 to 11 JUL 2024

ELEV	995	D	TDZE	995
------	-----	----------	------	-----



CATEGORY	A	B	C	D
LNAV MDA	1700-1	705 (800-1)	1700-2 705 (800-2)	NA

REIL Rwy 5 and 23 **①**
MIRL Rwy 5-23 **①**