

APP CRS	Rwy Idg	<b>4000</b>
<b>052°</b>	TDZE	<b>990</b>
	Apt Elev	<b>995</b>

# RNAV (GPS) RWY 5

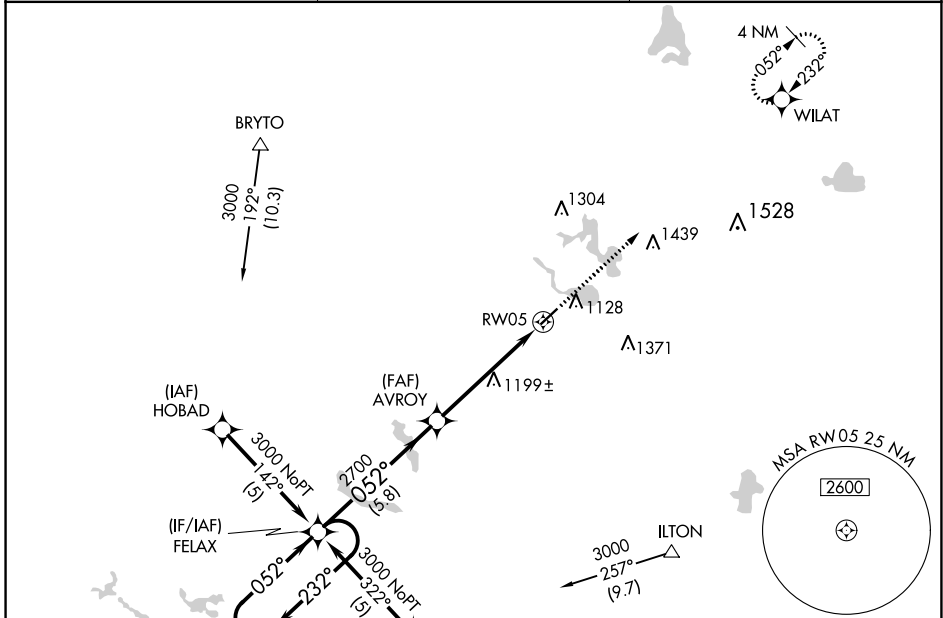
TRI-STATE STEUBEN COUNTY (ANQ)

RNP APCH.

- For uncompensated Baro-VNAV systems, LNAV/VNAV NA below -16°C or above 54°C.
- Rwy 5 helicopter visibility reduction below 3/4 SM NA.

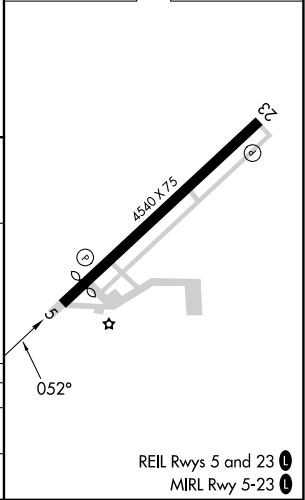
**MISSED APPROACH:**  
Climb to 3000 direct WILAT and hold.

AWOS-3 <b>118.175</b>	FORT WAYNE APP CON <b>127.2 284.6</b> (SW/NW) <b>132.15 284.6</b> (SE/NE)	UNICOM <b>123.075</b> (CTAF)
--------------------------	---	---------------------------------



ELEV 995	TDZE 990
----------	----------

4 NM Holding Pattern FELAX 3000 GP 3.00° TCH 40 232° 052° 2700 5.8 NM 3.8 NM 1.4 NM *LNNAV only RW05	3000 WILAT 			
	AVROY 2700 *1.4 NM to RW05			
CATEGORY	A	B	C	D
LNAV/VNAV DA	1474-1 <sup>3</sup> / <sub>4</sub>		484 (500-1 <sup>3</sup> / <sub>4</sub> )	NA
LNAV MDA	1460-1	470 (500-1)	1460-1 <sup>1</sup> / <sub>2</sub> 470 (500-1 <sup>1</sup> / <sub>2</sub> )	NA



REIL Rws 5 and 23   
MIRL Rwy 5-23

EC-2, 13 JUN 2024 to 11 JUL 2024

EC-2, 13 JUN 2024 to 11 JUL 2024