

WAAS CH <b>58133</b> <b>W17A</b>	APP CRS <b>177°</b>	Rwy Idg <b>4020</b> TDZE <b>1176</b> Apt Elev <b>1176</b>
--	------------------------	---

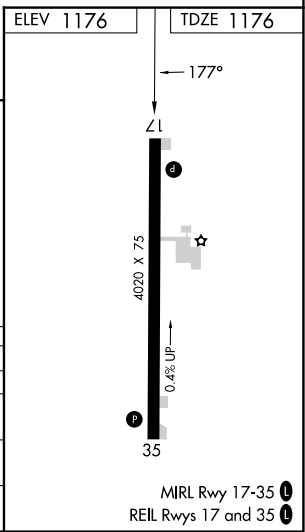
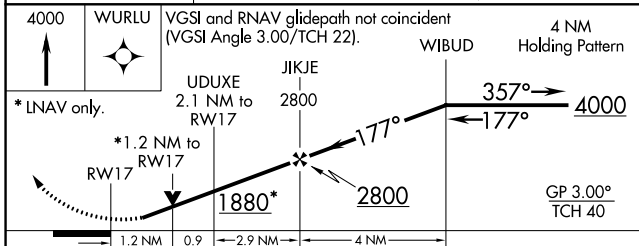
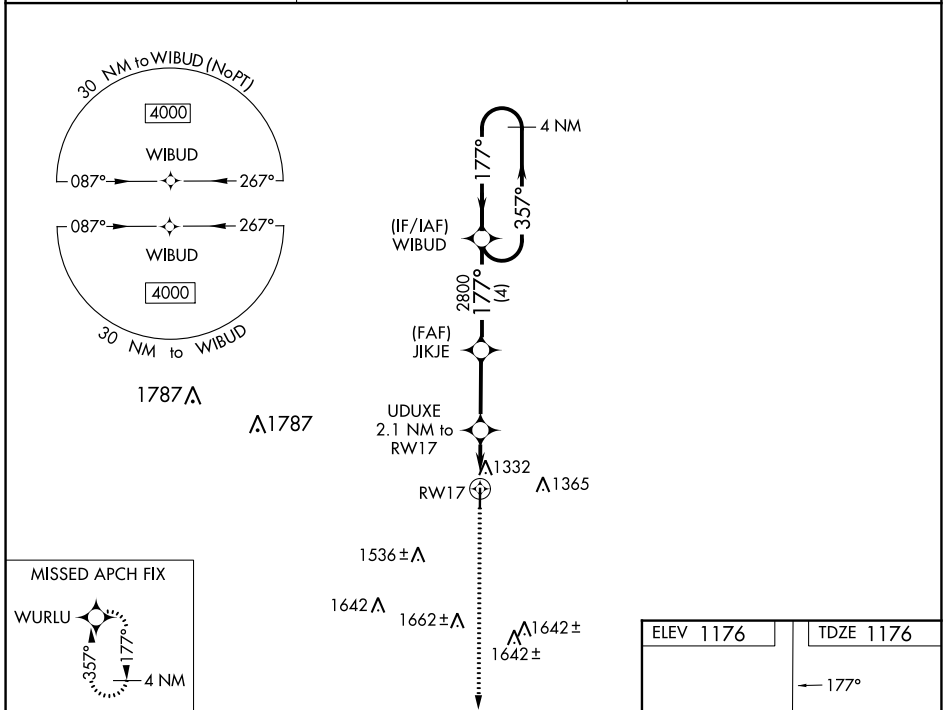
# RNAV (GPS) RWY 17

HAMPTON MUNI (HPT)

**▽** VDP and Baro-VNAV NA when using Mason City altimeter setting. For uncompensated Baro-VNAV systems, LNAV/VNAV NA below -17°C (2°F) or above 54°C (130°F).  
**△ NA** DME/DME RNP: 0.3 NA. Helicopter visibility reduction below ¼ SM NA. When local altimeter setting not received, use Mason City altimeter setting and increase all DA 67 feet and all MDA 80 feet, and LNAV/VNAV all Cats visibility ¼ mile.

**MISSED APPROACH:** Climb to 4000 direct WURLU and hold, continue climb-in-hold to 4000.

AWOS-3 <b>121.025</b>	MINNEAPOLIS CENTER <b>134.0 288.3</b>	UNICOM <b>122.7 (CTAF) 0</b>
--------------------------	--	---------------------------------



CATEGORY	A	B	C	D
LPV DA	1426-1	250 (300-1)		NA
LNAV/VNAV DA	1605-1½	429 (500-1½)		NA
LNAV MDA	1600-1	424 (500-1)		NA
<b>C</b> CIRCLING	1640-1	464 (500-1)		NA

NC-3, 13 JUN 2024 to 11 JUL 2024

NC-3, 13 JUN 2024 to 11 JUL 2024

MIRL Rwy 17-35 0  
REIL Rwy 17 and 35 0