

| | | |
|--|------------------------|---|
| WAAS CH 77833 W35A | APP CRS 357° | Rwy Idg 4020 TDZE 1168 Apt Elev 1176 |
|--|------------------------|---|

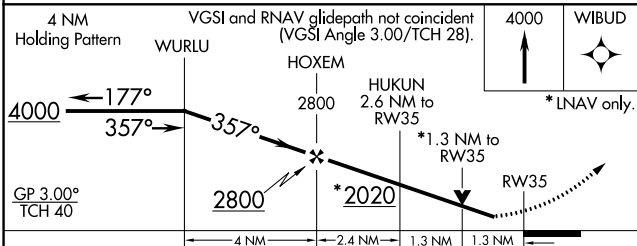
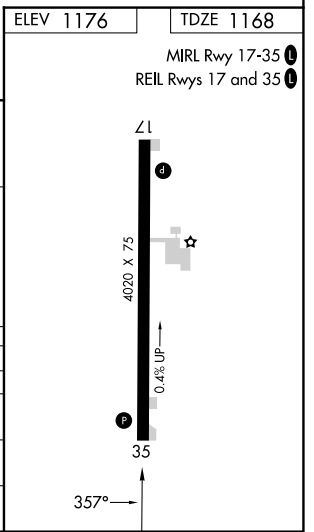
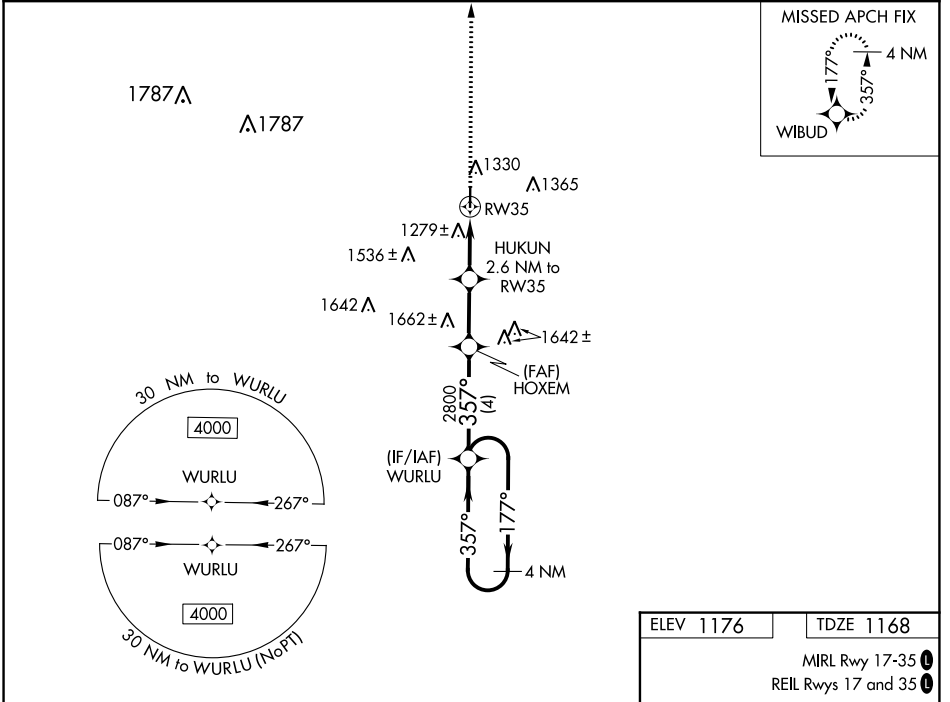
RNAV (GPS) RWY 35

HAMPTON MUNI (HPT)

▽ VDP and Baro-VNAV NA when using Mason City altimeter setting. For uncompensated Baro-VNAV systems, LNAV/VNAV NA below -17°C (2°F) or above 54°C (130°F).
△ NA DME/DME RNP-0.3 NA. Helicopter visibility reduction below 3/4 SM NA. When local altimeter setting not received, use Mason City altimeter setting and increase all DA 67 feet and all MDA 80 feet, and LNAV/VNAV all Cats visibility 1/4 mile.

MISSED APPROACH: Climb to 4000 direct WIBUD and hold, continue climb-in-hold to 4000.

| | | |
|--------------------------|--|-------------------------------|
| AWOS-3 121.025 | MINNEAPOLIS CENTER 134.0 288.3 | UNICOM 122.7 (CTAF) |
|--------------------------|--|-------------------------------|



| CATEGORY | A | B | C | D |
|-------------------|------------|-----------------|---|----|
| LPV DA | 1418-1 | 250 (300-1) | | NA |
| LNAV/VNAV DA | 1654-1 5/8 | 486 (500-1 5/8) | | NA |
| LNAV MDA | 1620-1 | 452 (500-1) | | NA |
| C CIRCLING | 1640-1 | 464 (500-1) | | NA |

NC-3, 13 JUN 2024 to 11 JUL 2024

NC-3, 13 JUN 2024 to 11 JUL 2024