

WAAS CH 86231	APP CRS 156°	Rwy Idg TDZE 1459	4435
W16A		Apt Elev 1478	

RNAV (GPS) RWY 16

TAYLOR COUNTY (MDZ)

RNP APCH.

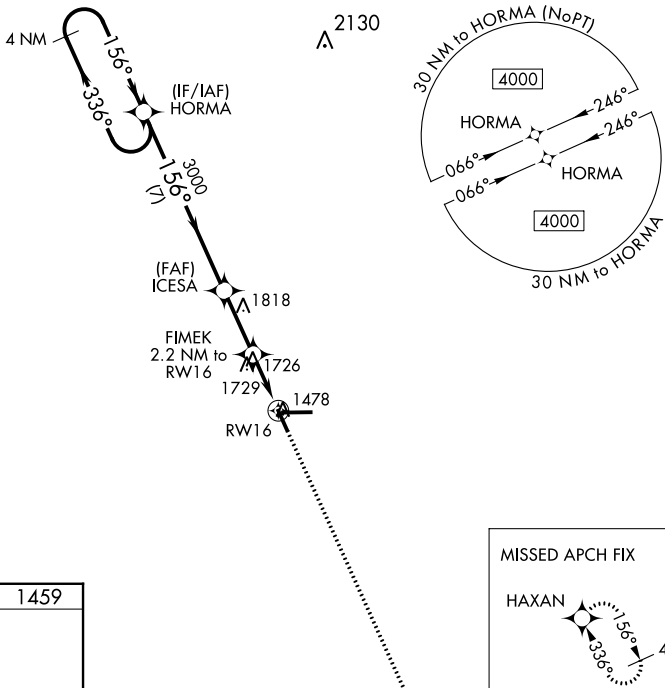
⚠ When local altimeter setting not received, use Merrill altimeter setting and increase all MDA 100 feet and increase all Cat C/D visibility $\frac{1}{4}$ mile. Rwy 16 helicopter visibility reduction below $\frac{3}{4}$ SM NA. VDP NA when using Merrill altimeter setting.

MISSED APPROACH:
Climb to 4000 direct HAXAN and hold.

AWOS-3
119.025

MINNEAPOLIS CENTER
124.4 317.7

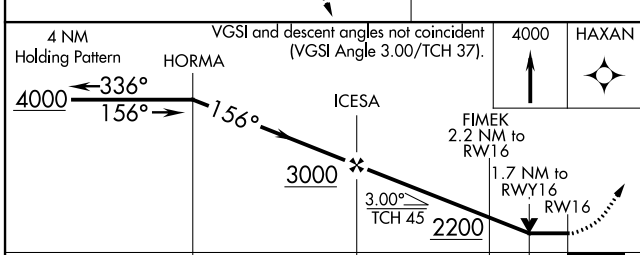
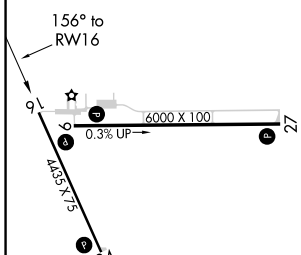
UNICOM
122.8 (CTAF)



EC-3, 13 JUN 2024 to 11 JUL 2024

EC-3, 13 JUN 2024 to 11 JUL 2024

ELEV 1478	TDZE 1459
-----------	-----------



CATEGORY	A	B	C	D
LP MDA	2040-1	581 (600-1)	2040-1 $\frac{3}{4}$	581 (600-1 $\frac{3}{4}$)
LNAV MDA	2060-1	601 (600-1)	2060-1 $\frac{3}{4}$	601 (600-1 $\frac{3}{4}$)
CIRCLING	2060-1	582 (600-1)	2060-1 $\frac{3}{4}$ 582 (600-1 $\frac{3}{4}$)	2180-2 $\frac{1}{4}$ 702 (800-2 $\frac{1}{4}$)