

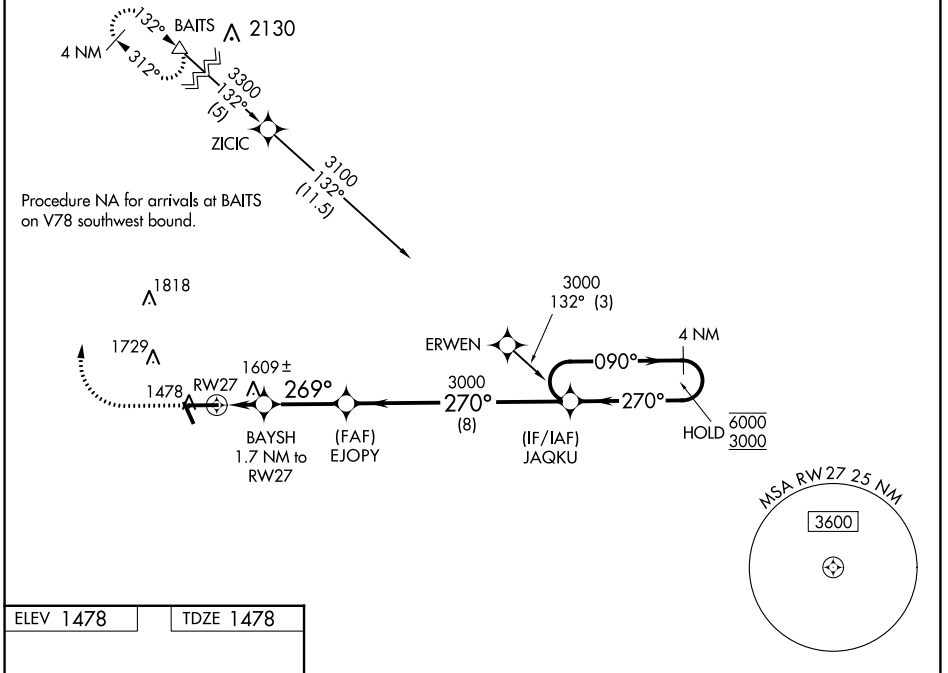
WAAS CH 66011 W27A	APP CRS 269°	Rwy Idg TDZE 1478 Apt Elev 1478	6000
--	------------------------	---	-------------

RNAV (GPS) RWY 27

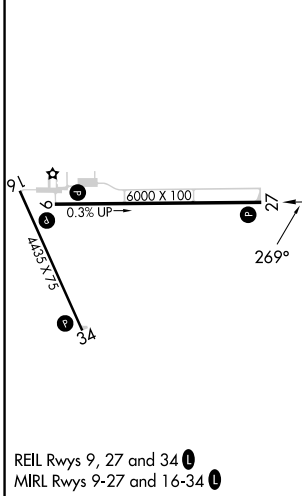
TAYLOR COUNTY (MDZ)

RNP APCH-GPS.	<p>MISSED APPROACH: Climb to 2000 then climbing right turn to 3300 direct BAITS and hold.</p>
<p>▼ For uncompensated Baro-VNAV systems, LNAV/VNAV NA below -17°C or above 54°C.</p>	

AWOS-3 119.025	MINNEAPOLIS CENTER 124.4 317.7	UNICOM 122.8 (CTAF) 0
--------------------------	--	---------------------------------



ELEV 1478	TDZE 1478
-----------	-----------



	2000	3300	BAITS	EJOPLY	JAQKU	4 NM Holding Pattern
			△	3000		
				3000		
				270°	090°	6000
				270°	270°	3000
				2060		
				3000		
				269°		
				1.1 NM		
				0.7 NM		
				2.9 NM		
				8 NM		
						GP 3.00°
						TCH 46
CATEGORY	A	B	C	D		
LPV DA		1678-¾	200 (200-¾)			
LNAV/VNAV DA		1877-1½	399 (400-1½)			
LNAV MDA	1860-1	382 (400-1)	1860-1½	382 (400-1½)		
CIRCLING	1900-1 422 (500-1)	2040-1 562 (600-1)	2040-1½ 562 (600-1½)	2180-2¼ 702 (800-2¼)		

EC-3, 13 JUN 2024 to 11 JUL 2024

EC-3, 13 JUN 2024 to 11 JUL 2024