

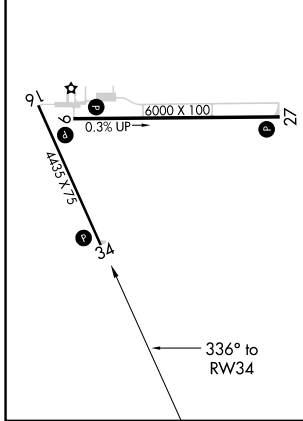
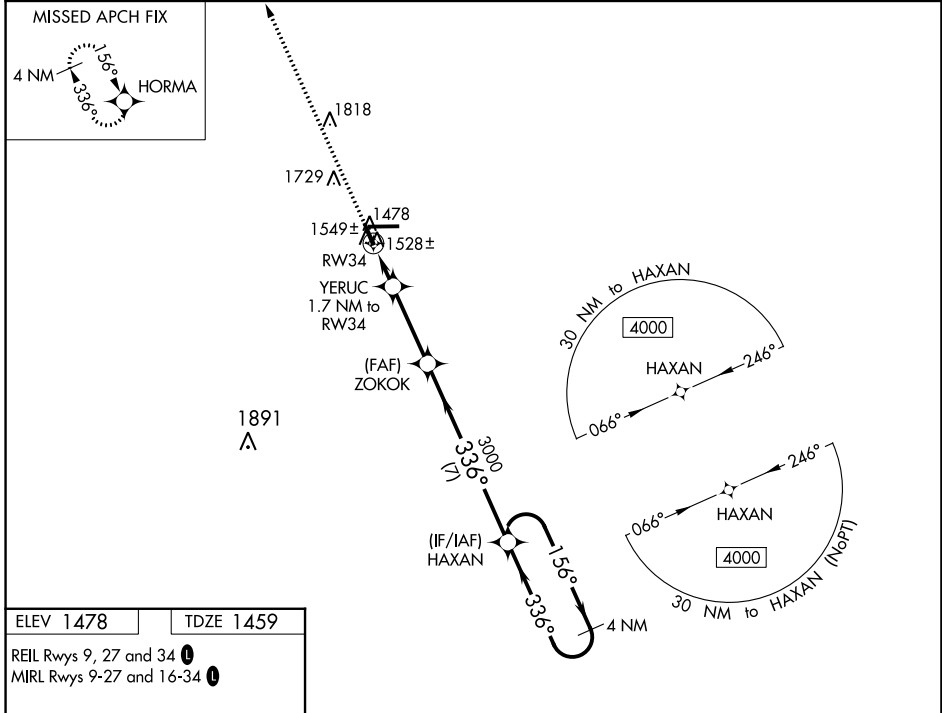
WAAS CH 73029 W34A	APP CRS 336°	Rwy Idg TDZE Apt Elev	4435 1459 1478
--	------------------------	-----------------------------	---

RNAV (GPS) RWY 34

TAYLOR COUNTY (MDZ)

RNP APCH.	MISSED APPROACH: Climb to 4000 direct HORMA and hold.
<p>▼ When local altimeter setting not received, use Merrill altimeter setting: increase all MDA 100 feet and all Cat C and D visibilities ¼ SM. VDP NA when using Merrill altimeter setting.</p>	

AWOS-3 119.025	MINNEAPOLIS CENTER 124.4 317.7	UNICOM 122.8 (CTAF) 0
--------------------------	--	---------------------------------



4000	HORMA	VGSI and descent angles not coincident (VGSI Angle 3.00/TCH 27).	4 NM Holding Pattern	
	YERUC 1.7 NM to RW34	ZOKOK	HAXAN	
	0.9 NM to RW34	≤ 3.00° TCH 45	4000	
	2020	3000	156° →	
	← 336°		← 336°	
	← 0.9	0.8	3 NM	7 NM
CATEGORY	A	B	C	D
LP MDA	1780-1 321 (400-1)			
LNAV MDA	1800-1 341 (400-1)			
CIRCLING	1940-1 462 (500-1)	2040-1 562 (600-1)	2040-1½ 562 (600-1½)	2180-2¼ 702 (800-2¼)

EC-3, 13 JUN 2024 to 11 JUL 2024

EC-3, 13 JUN 2024 to 11 JUL 2024