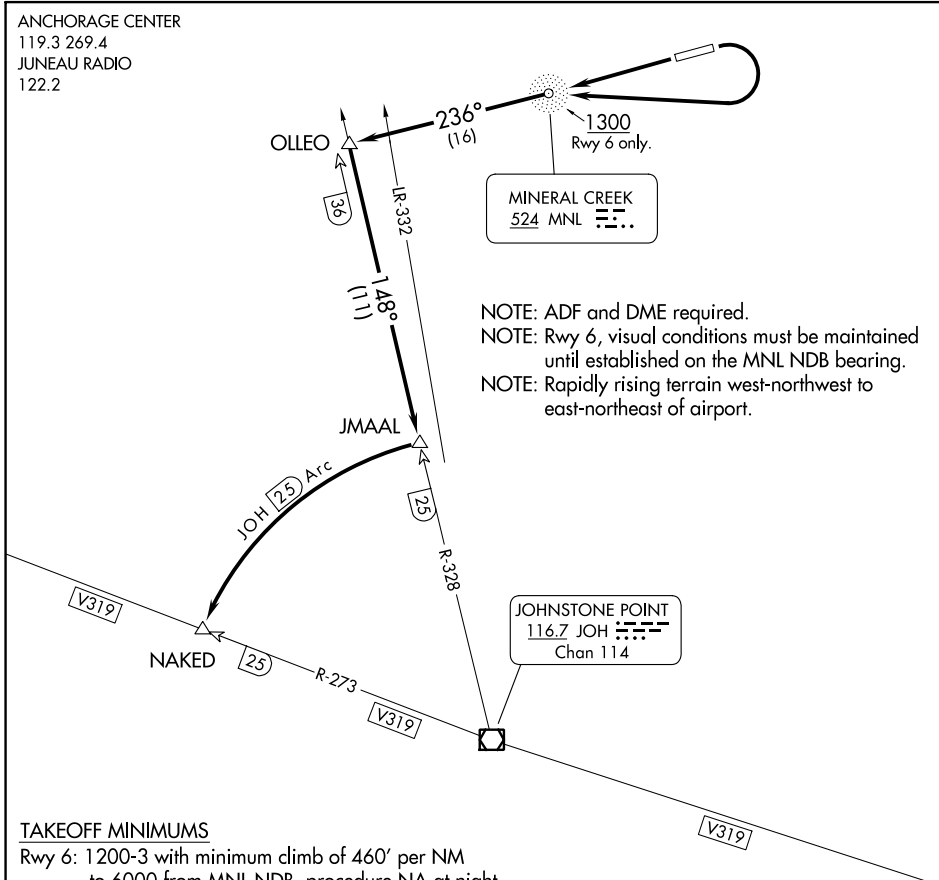


(JMAAL3.NAKED) 23334

# JMAAL THREE DEPARTURE (OBSTACLE)

VALDEZ PIONEER FLD (VDZ) (PAVD)  
AL-6213 (FAA) VALDEZ, ALASKA

ANCHORAGE CENTER  
119.3 269.4  
JUNEAU RADIO  
122.2



NOTE: ADF and DME required.  
 NOTE: Rwy 6, visual conditions must be maintained until established on the MNL NDB bearing.  
 NOTE: Rapidly rising terrain west-northwest to east-northeast of airport.

AK, 16 MAY 2024 to 11 JUL 2024

AK, 16 MAY 2024 to 11 JUL 2024

### TAKEOFF MINIMUMS

Rwy 6: 1200-3 with minimum climb of 460' per NM to 6000 from MNL NDB, procedure NA at night.  
 Rwy 24: Standard with minimum climb of 460' per NM to 6000.

### TAKEOFF OBSTACLE NOTES

Rwy 24: Trees 469' from DER, 482' right of centerline, up to 100' AGL/137' MSL.  
 Trees 623' from DER, 385' left of centerline, up to 100' AGL/130' MSL.

NOTE: Chart not to scale.

### DEPARTURE ROUTE DESCRIPTION

TAKEOFF RUNWAY 6: Turn right as soon as practical, climb in visual conditions to MNL NDB at or above 1300, then on MNL NDB bearing 236° to OLLEO INT, thence. . . .

TAKEOFF RUNWAY 24: Climb direct to MNL NDB then on MNL bearing 236° to OLLEO INT, thence. . . .

. . . . continue climb to 6000 via JOH VOR/DME R-328 southbound to JMAAL/JOH VOR/DME 25 DME, fly JOH VOR/DME 25 DME arc counterclockwise to NAKED/JOH VOR/DME R-273 25 DME.

# JMAAL THREE DEPARTURE (OBSTACLE)

(JMAAL3.NAKED) 10JAN13

VALDEZ, ALASKA  
VALDEZ PIONEER FLD (VDZ) (PAVD)