

WAAS CH <b>49131</b> <b>W17A</b>	APP CRS <b>166°</b>	Rwy Idg <b>4010</b> TDZE <b>1522</b> Apt Elev <b>1523</b>
--	------------------------	---

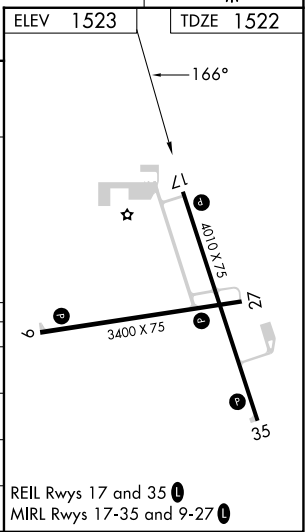
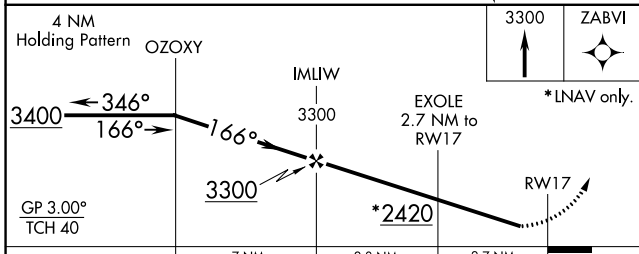
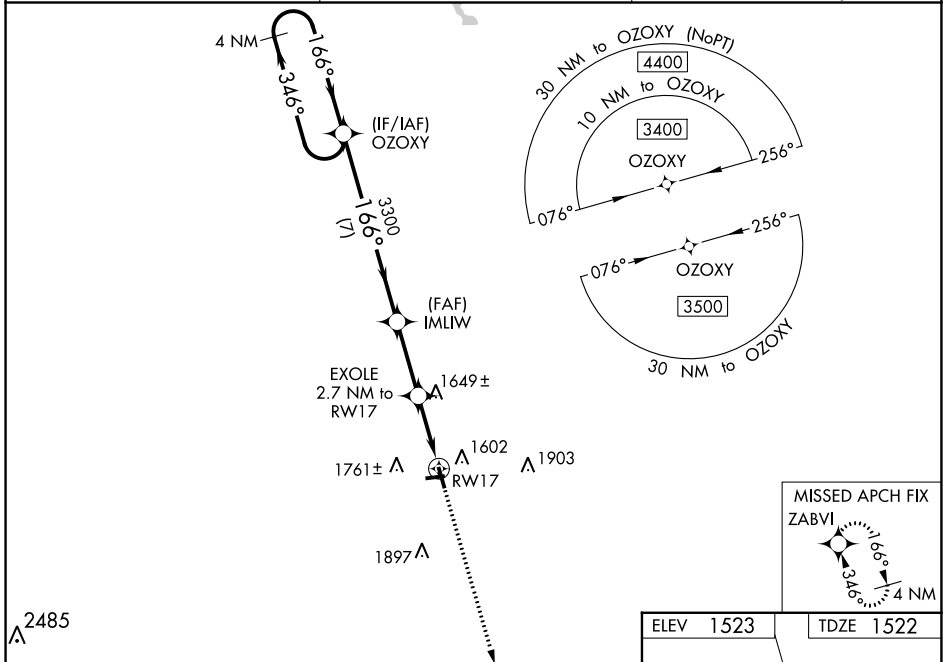
# RNAV (GPS) RWY 17

LANGLADE COUNTY (AIG)

▼ Baro-VNAV NA when using Wausau Downtown altimeter setting. For uncompensated Baro-VNAV systems, LNAV/VNAV NA below -18°C (0°F) or above 54°C (130°F). Procedure NA at night.  
 ▲ DME/DME RNP-0.3 NA. Helicopter visibility reduction below 1 SM NA. When local altimeter setting not received, use Wausau Downtown altimeter setting; increase all DA 105 feet all LPV visibilities ¼ mile, and all LNAV/VNAV visibilities ⅜ mile; increase all MDA 120 feet, LNAV Cat C and D visibilities ¼ mile, Circling Cat C visibility ½ mile, and Cat D visibility ¼ mile.

MISSED APPROACH:  
Climb to 3300 direct ZABVI and hold.

AWOS-3 <b>119.075</b>	MINNEAPOLIS CENTER <b>124.4 317.7</b>	UNICOM <b>122.8 (CTAF) 1</b>
--------------------------	--	---------------------------------



CATEGORY	A	B	C	D
LPV DA		1772-1	250 (300-1)	
LNAV/VNAV DA		1924-1⅜	402 (400-1⅜)	
LNAV MDA	1920-1	398 (400-1)	1920-1⅛	398 (400-1⅛)
CIRCLING	2120-1	597 (600-1)	2120-1½	2120-2
			597 (600-1½)	597 (600-2)

EC-3, 13 JUN 2024 to 11 JUL 2024

EC-3, 13 JUN 2024 to 11 JUL 2024