

WAAS CH <b>45732</b> <b>W35A</b>	APP CRS <b>346°</b>	Rwy Idg TDZE Apt Elev	<b>4010</b> <b>1522</b> <b>1523</b>
--	------------------------	-----------------------------	---

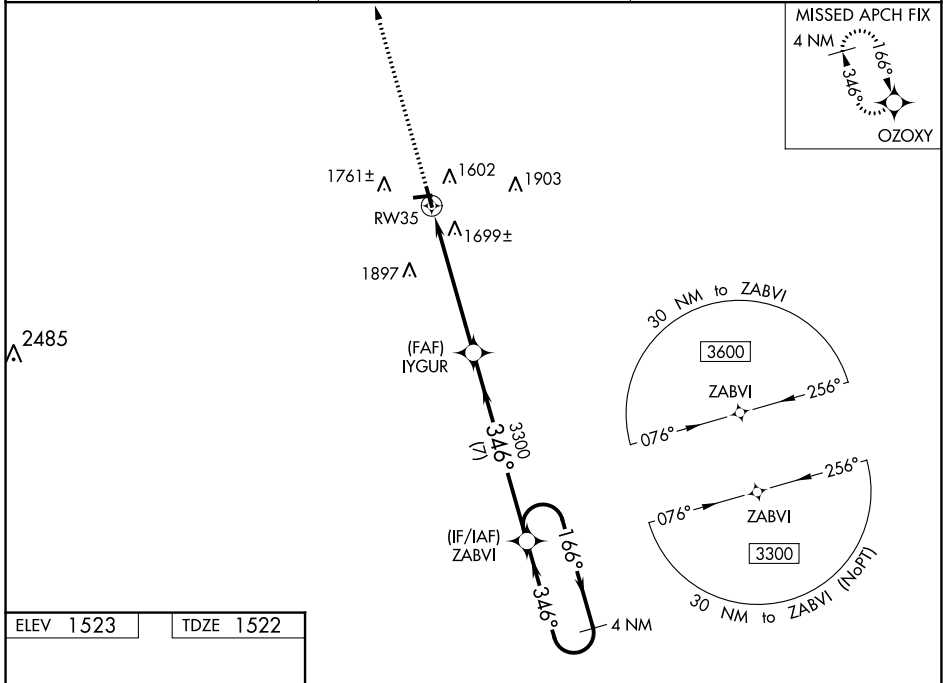
# RNAV (GPS) RWY 35

LANGLADE COUNTY (AIG)

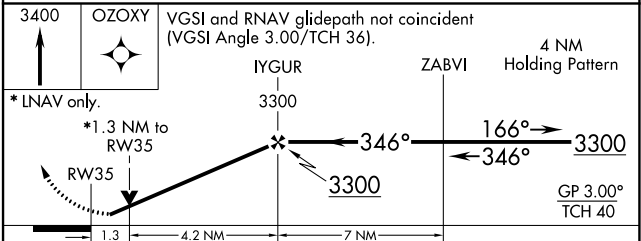
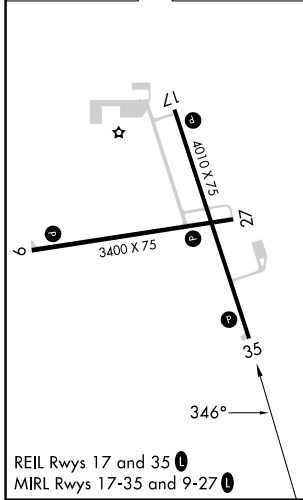
**⚠** For uncompensated Baro-VNAV systems, LNAV/VNAV NA below -18°C (0°F) or above 54°C (130°F). DME/DME RNP-0.3 NA. Baro-VNAV and VDP NA when using Wausau Downtown altimeter setting. Helicopter visibility reduction below ¼ SM NA. When local altimeter setting not received, use Wausau Downtown altimeter setting; increase all DA 105 feet and visibility LPV all Cats ¼ mile and LNAV/VNAV all Cats ¾ mile; increase all MDA 120 feet and visibility LNAV Cat C/D and Circling Cat C ½ mile and Circling Cat D ¼ mile.

**MISSED APPROACH:** Climb to 3400 direct OZOXY and hold.

AWOS-3 <b>119.075</b>	MINNEAPOLIS CENTER <b>124.4 317.7</b>	UNICOM <b>122.8 (CTAF) 0</b>
--------------------------	--	---------------------------------



ELEV 1523	TDZE 1522
-----------	-----------



CATEGORY	A	B	C	D
LPV DA		1772-1	250 (300-1)	
LNAV/VNAV DA		2019-1¾	497 (500-1¾)	
LNAV MDA	1960-1	438 (500-1)	1960-1¼	438 (500-1¼)
CIRCLING	2120-1	597 (600-1)	2120-1½ 597 (600-1½)	2120-2 597 (600-2)

EC-3, 13 JUN 2024 to 11 JUL 2024

EC-3, 13 JUN 2024 to 11 JUL 2024