

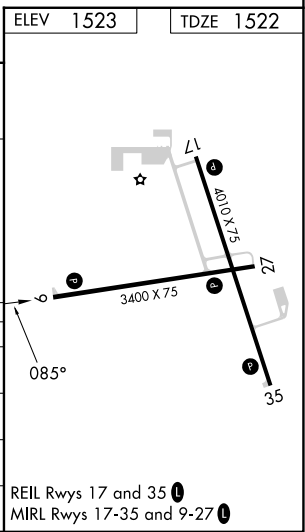
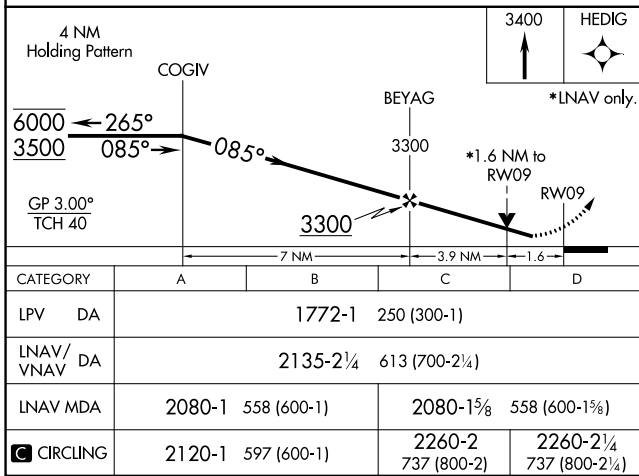
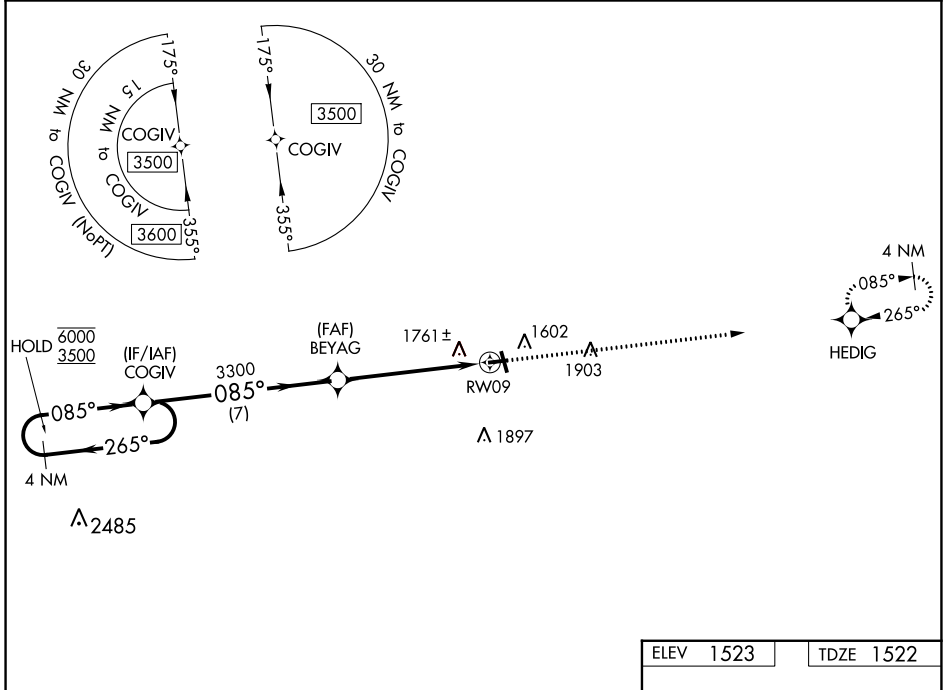
WAAS CH 82130 W09A	APP CRS 085°	Rwy Idg 3400 TDZE 1522 Apt Elev 1523
--	------------------------	---

RNAV (GPS) RWY 9

LANGLADE COUNTY (AIG)

RNP APCH.	MISSED APPROACH: Climb to 3400 direct HEDIG and hold.
▽ Rwy 9 helicopter visibility reduction below 3/4 SM NA. ▲ For uncompensated Baro-VNAV systems, LNAV/VNAV NA below -18C or above 54°C.	

AWOS-3 119.075	MINNEAPOLIS CENTER 124.4 317.7	UNICOM 122.8 (CTAF) 0
--------------------------	--	---------------------------------



CATEGORY	A	B	C	D
LPV DA	1772-1		250 (300-1)	
LNAV/VNAV DA	2135-2 1/4		613 (700-2 1/4)	
LNAV MDA	2080-1 558 (600-1)		2080-1 5/8 558 (600-1 1/8)	
C CIRCLING	2120-1 597 (600-1)		2260-2 737 (800-2) 2260-2 1/4 737 (800-2 1/4)	

REIL Rwy 17 and 35 **0**
MIRL Rwy 17-35 and 9-27 **0**

EC-3, 13 JUN 2024 to 11 JUL 2024

EC-3, 13 JUN 2024 to 11 JUL 2024