

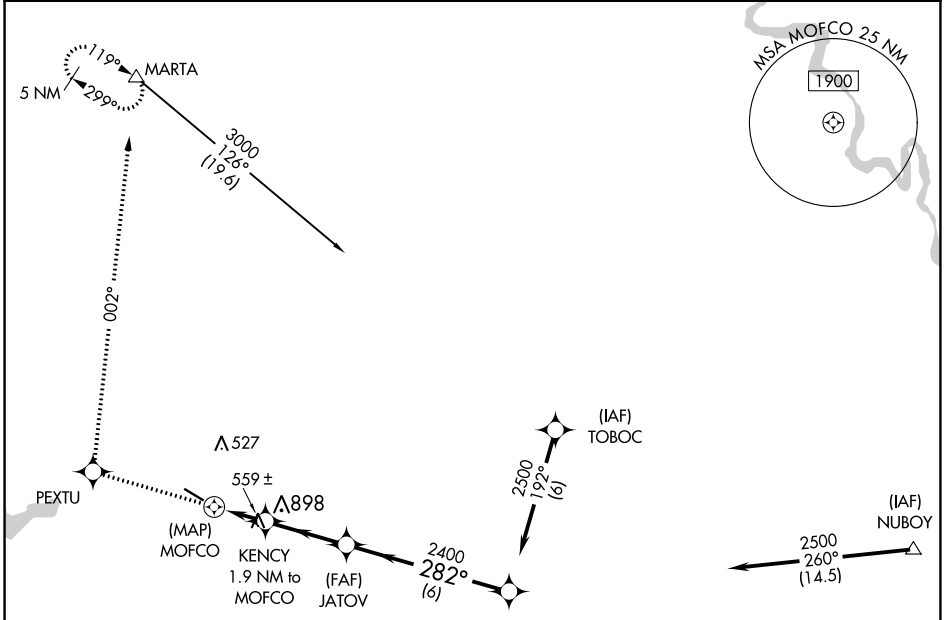
APP CRS	Rwy Idg <b>4402</b>
<b>282°</b>	TDZE <b>311</b>
	Apt Elev <b>319</b>

# RNAV (GPS) RWY 30

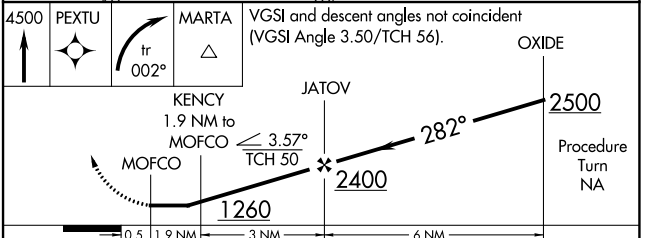
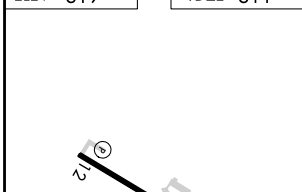
HART (3R4)

RNP APCH.	MISSED APPROACH: Climb to 4500 direct PEXTU and right turn via track 002° to MARTA and hold, continue climb in hold to 4500.
<p>▼ Rwy 30 helicopter visibility reduction below ¼ SM NA.</p> <p>▲ NA Use Fort Polk altimeter setting; when not received, use Natchitoches altimeter setting and increase all MDA 20 feet.</p>	

POLK APP CON <b>123.7 261.3</b>	GCO <b>135.075</b>	UNICOM <b>122.8 (CTAF)</b>
------------------------------------	-----------------------	-------------------------------



ELEV 319	TDZE 311
----------	----------



REIL Rwys 12 and 30	MIRL Rwy 12-30			
CATEGORY	A	B	C	D
LNAV MDA	900-1	589 (600-1)	900-1¾ 589 (600-1¾)	NA

SC-4, 13 JUN 2024 to 11 JUL 2024

SC-4, 13 JUN 2024 to 11 JUL 2024