

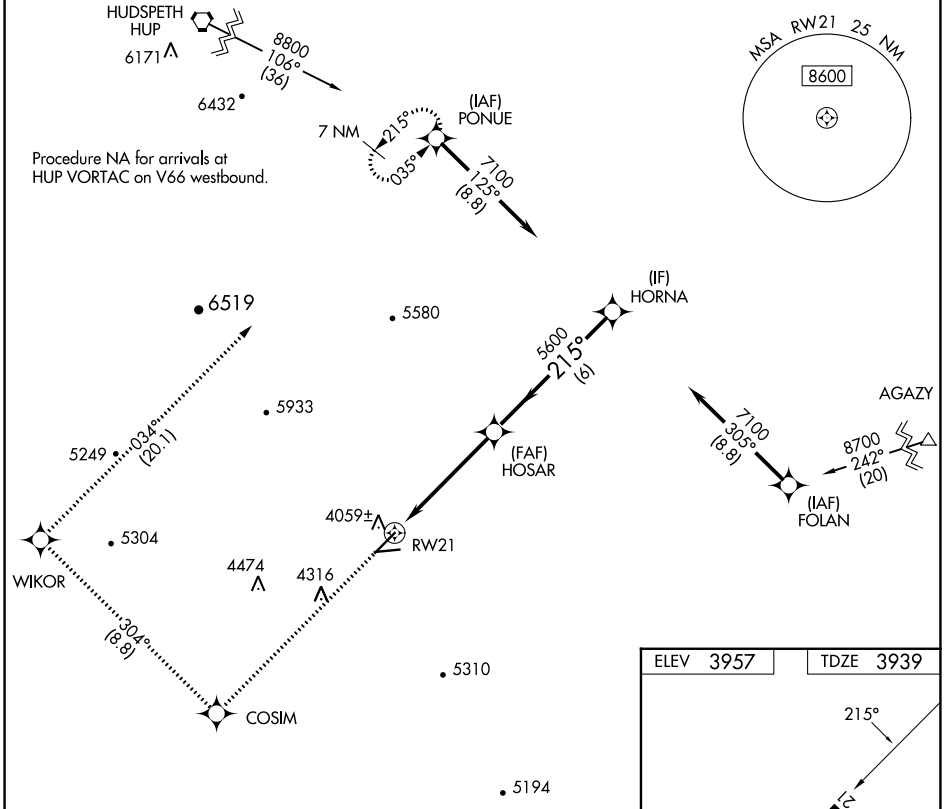
# RNAV (GPS) RWY 21

CULBERSON COUNTY (VHN)

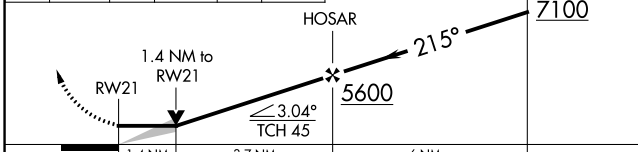
APP CRS <b>215°</b>	Rwy Idg <b>6005</b>
	TDZE <b>3939</b>
	Apt Elev <b>3957</b>

RNP APCH.	MISSED APPROACH: Climb to 8800 direct COSIM and on track 304° to WIKOR and on track 034° to PONUE and hold.
<p>▼ Circling to Rwy 7, 25 NA at night.</p> <p>▲ Circling NA south of Rwy 25 and southeast of Rwy 3.</p>	

AWOS-3PT <b>119.925</b>	ALBUQUERQUE CENTER <b>135.875 292.15</b>	CTAF <b>122.9 0</b>
----------------------------	---	------------------------



8800	COSIM	WIKOR	PONUE
↑	✧	✧	✧
	tr 304°	tr 034°	



ELEV 3957	TDZE 3939
-----------	-----------

Vertical profiles:  
 - 6005 x 7.6 (215° track)  
 - 5353 x 7.5 (0.9% UP)  
 - 8005 x 7.6 (215° track)  
 - 8700 (0.8% UP)

MIRL Rwy 3-21 and 7-25 0

CATEGORY	A	B	C	D
LNVA MDA	4400-1	461 (500-1)	4400-1 $\frac{3}{8}$	461 (500-1 $\frac{3}{8}$ )
CIRCLING	4440-1 483 (500-1)	4540-1 583 (600-1)	4640-2 683 (700-2)	5580-3 1623 (1700-3)

SC-3, 13 JUN 2024 to 11 JUL 2024

SC-3, 13 JUN 2024 to 11 JUL 2024