

APP CRS	Rwy Idg	3199
275°	TDZE	919
	Apt Elev	920

RNAV (GPS) RWY 27

PRICES (9G2)

RNP APCH.

Use Flint altimeter setting; when not received, use Howell altimeter setting.
 Procedure NA at night. Rwy 27 helicopter visibility reduction below 1 SM NA.

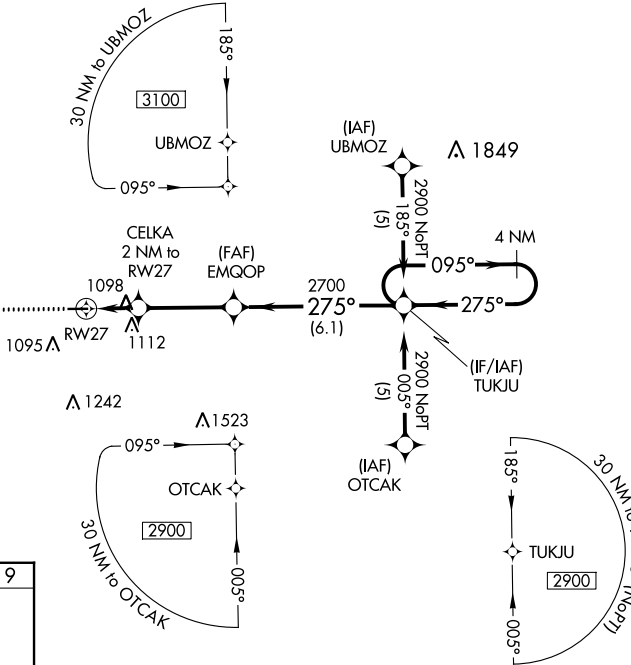
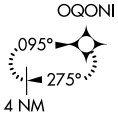
MISSED APPROACH: Climb to 3100 direct OQONI and hold.

FNT ASOS
133.15

GREAT LAKES APP CON ★
128.55 257.9

UNICOM
123.0 (CTAF) 0

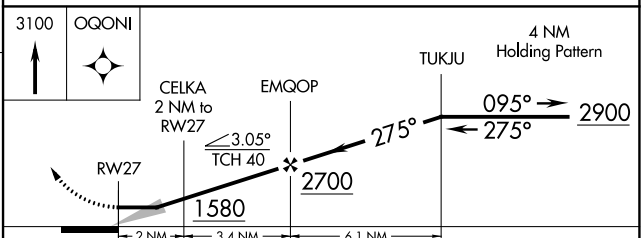
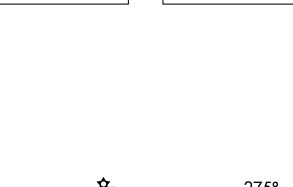
MISSED APCH FIX



EC-1, 13 JUN 2024 to 11 JUL 2024

EC-1, 13 JUN 2024 to 11 JUL 2024

ELEV 920 TDZE 919



REIL Rwy 9 0
 MIRL Rwy 9-27 0

CATEGORY	A	B	C	D
LNAV MDA	1400-1 481 (500-1)		NA	