

APP CRS	Rwy Idg	3716
356°	TDZE	1498
	Apr Elev	1514

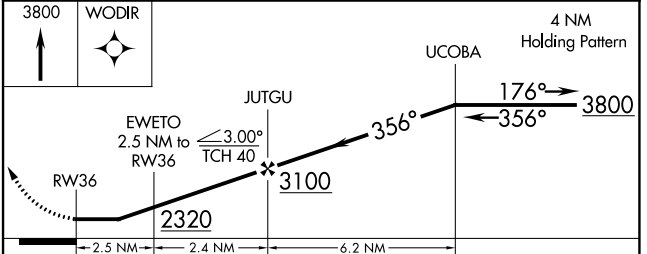
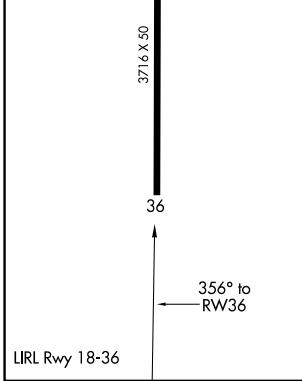
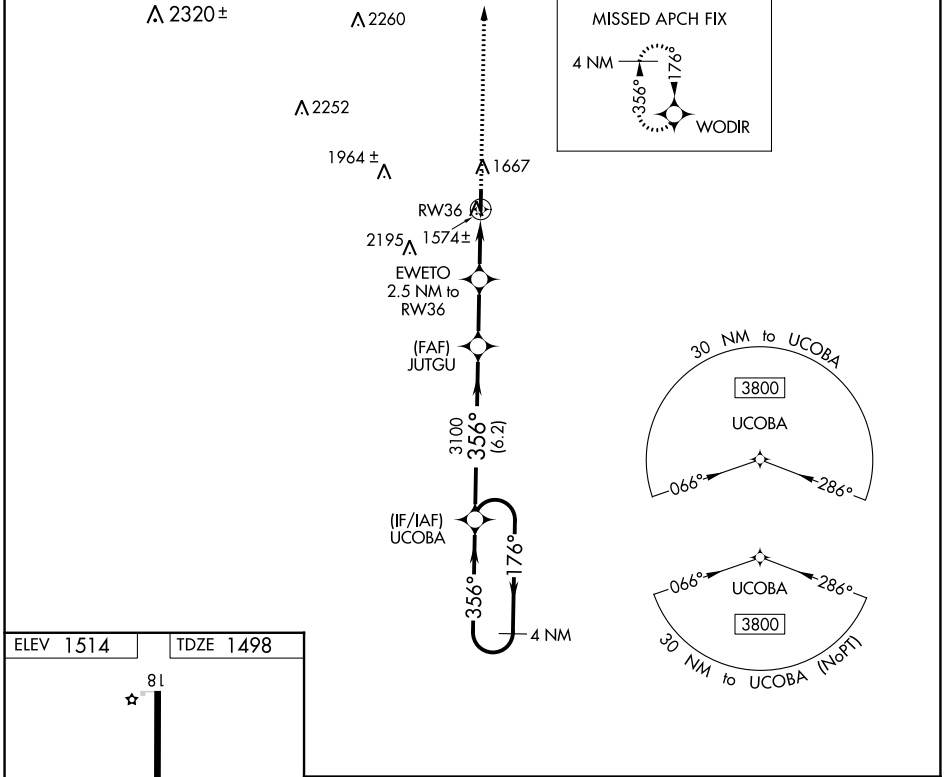
RNAV (GPS) RWY 36

MASON COUNTY (T92)

▼ Rwy 18/36 helicopter visibility reduction below 1 SM NA.
▲ NA DME/DME RNP-0.3 NA. Procedure NA at night.
 Use Brady altimeter setting; when not received, use Llano altimeter setting and increase all MDAs 20 feet.

MISSED APPROACH: Climb to 3800 direct WODIR and hold.

BBD AWOS-3 118.375	HOUSTON CENTER 132.35 317.5	CTAF 122.9
------------------------------	---------------------------------------	----------------------



CATEGORY	A	B	C	D
LNAV MDA	1940-1	442 (500-1)	NA	
C CIRCLING	2140-1	626 (700-1)	NA	

SC-3, 13 JUN 2024 to 11 JUL 2024

SC-3, 13 JUN 2024 to 11 JUL 2024