

WAAS CH <b>69326</b> <b>W24A</b>	APP CRS <b>238°</b>	Rwy Idg TDZE Apt Elev	<b>5004</b> <b>713</b> <b>733</b>
--	------------------------	-----------------------------	---

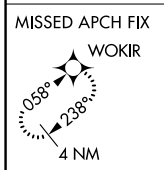
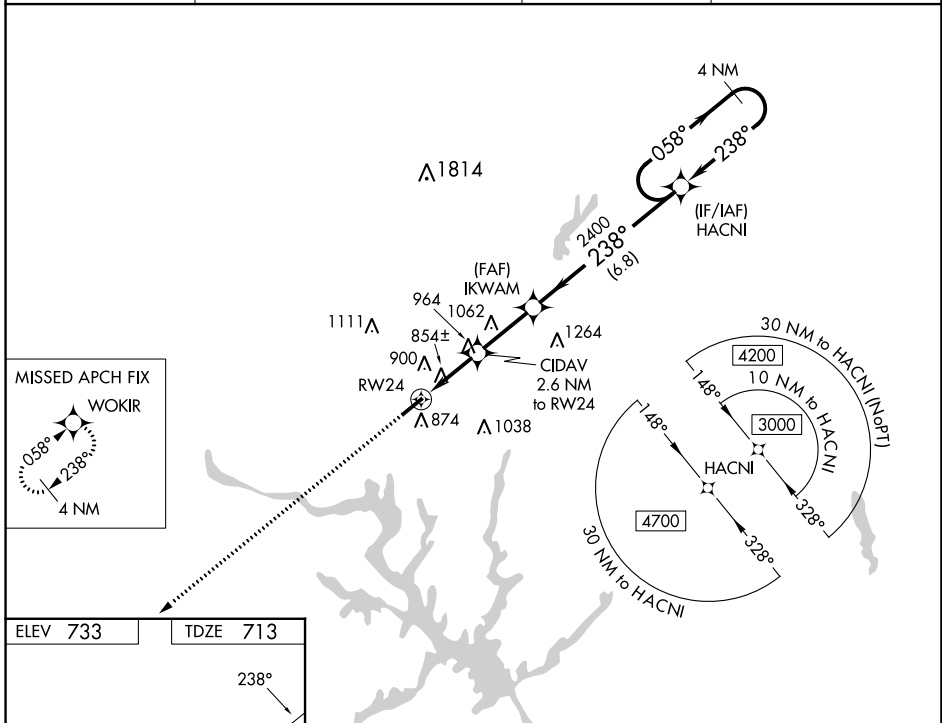
# RNAV (GPS) RWY 24

DAVIDSON COUNTY EXEC (E.XX)

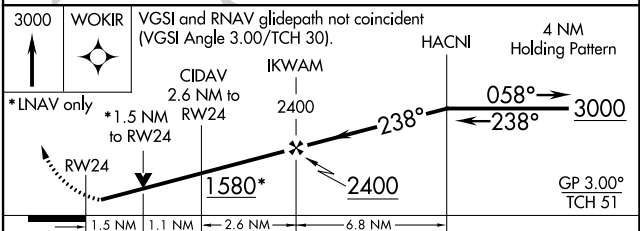
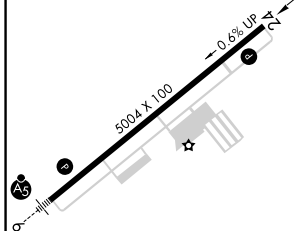
**⚠** For uncompensated Baro-VNAV systems, LNAV/VNAV NA below -16°C (4°F) or above 54°C (130°F). When local altimeter setting not received, use Salisbury altimeter setting and increase all DA 37 feet and all MDA 40 feet, increase LPV and LNAV/VNAV all Cats visibility 1/8 SM, LNAV Cat C visibility 1/4 SM. DME/DME RNP-0.3 NA. Helicopter visibility reduction below 3/4 SM NA. Baro-VNAV and VDP NA when using Salisbury altimeter setting.

**MISSED APPROACH:** Climb to 3000 direct WOKIR and hold.

AWOS-3 <b>119.825</b>	GREENSBORO APP CON <b>126.6 327.075</b>	GCO <b>135.075</b>	UNICOM <b>122.8 (CTAF) 0</b>
--------------------------	--	-----------------------	---------------------------------



ELEV 733	TDZE 713
----------	----------



CATEGORY	A	B	C	D
LPV DA	1026-1	313 (300-1)		NA
LNAV/VNAV DA	1150-1½	437 (500-1½)		NA
LNAV MDA	1220-1	507 (500-1)	1220-1¾ 507 (500-1¾)	NA
CIRCLING	1220-1 487 (500-1)	1240-1 507 (600-1)	1340-1¾ 607 (700-1¾)	NA

SE-2, 13 JUN 2024 to 11 JUL 2024

SE-2, 13 JUN 2024 to 11 JUL 2024