

WAAS CH <b>50234</b> W23A	APP CRS <b>233°</b>	Rwy Idg TDZE Apt Elev	<b>5018</b> <b>4482</b> <b>4514</b>
---------------------------------	------------------------	-----------------------------	---

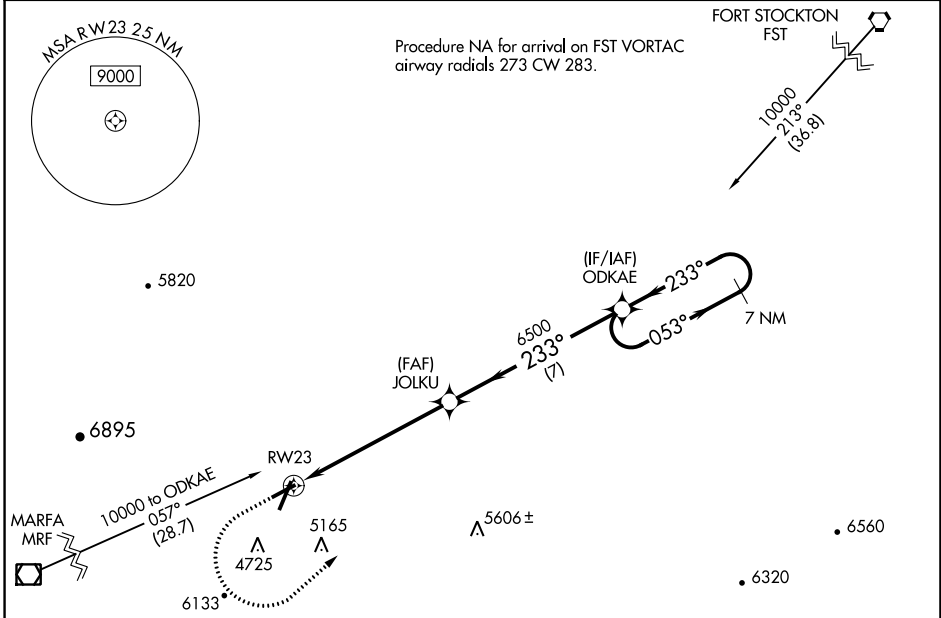
# RNAV (GPS) RWY 23

ALPINE-CASPARIS MUNI (E38)

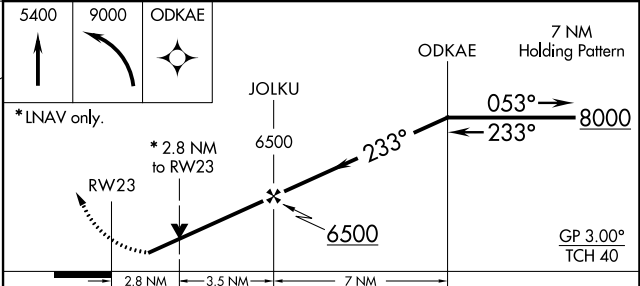
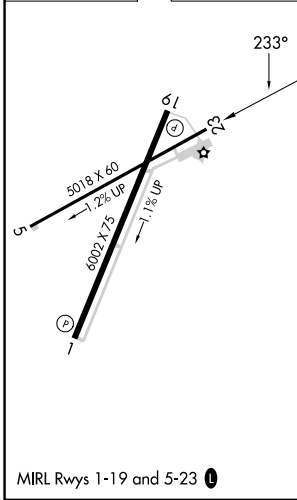
**⚠** For uncompensated Baro-VNAV systems, LNAV/VNAV NA below -23°C (-9°F) or above 54°C (130°F). Circling NA west of Rwy 1-19.  
**⚠** Rwy 23 helicopter visibility reduction below ¼ SM NA.  
 DME/DME RNP-0.3 NA.

**MISSED APPROACH:** (Do not exceed 165K until ODKAE)  
 Climb to 5400 then climbing left turn to 9000 direct ODKAE and hold, continue climb-in-hold to 9000.

AWOS-3 <b>119.025</b>	ALBUQUERQUE CENTER <b>135.875 292.15</b>	UNICOM <b>122.8 (CTAF) ①</b>
--------------------------	---	---------------------------------



ELEV 4514	TDZE 4482
-----------	-----------



CATEGORY	A	B	C	D
LPV DA	4999-1 3/8	517 (500-1 3/8)		NA
LNAV/VNAV DA	5087-1 3/4	605 (600-1 3/4)		NA
LNAV MDA	5400-1 1/4	918 (900-1 1/4)	5400-2 1/2 918 (900-2 1/2)	NA
<b>C</b> CIRCLING	5400-1 1/4 886 (900-1 1/4)	5460-1 1/4 946 (1000-1 1/4)	5760-3 1246 (1300-3)	NA

SC-3, 13 JUN 2024 to 11 JUL 2024

SC-3, 13 JUN 2024 to 11 JUL 2024