

WAAS CH <b>40021</b> <b>W01A</b>	APP CRS <b>009°</b>	Rwy Idg TDZE <b>1059</b> Apt Elev <b>1077</b>
----------------------------------------	------------------------	-----------------------------------------------------

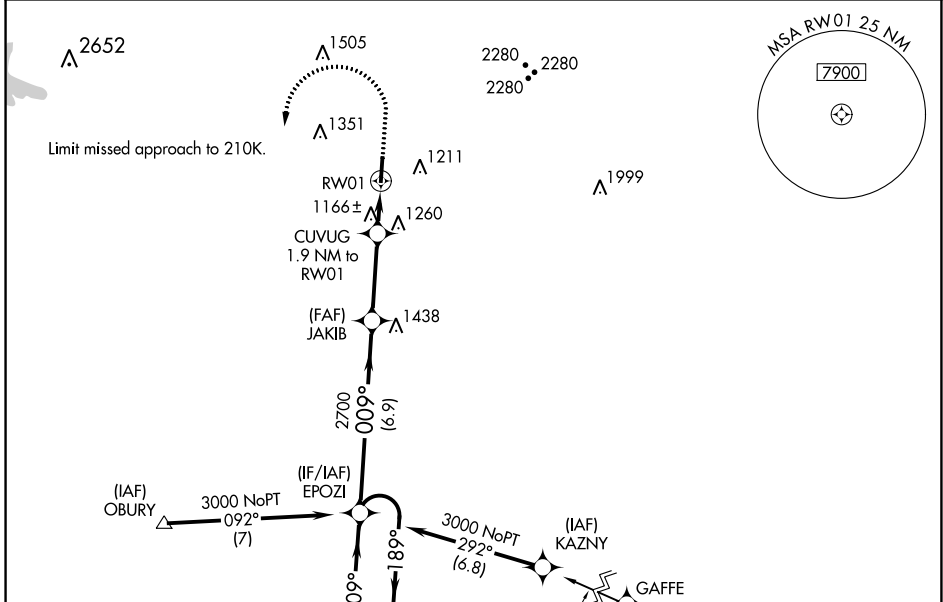
# RNAV (GPS) RWY 1

RUTHERFORD COUNTY/MARCHMAN FLD (FQD)

**⚠** Baro-VNAV NA when using Shelby-Cleveland County Rgnl altimeter setting. For uncompensated Baro-VNAV systems, LNAV/VNAV NA below -17°C (2°F) or above 54°C (130°F). DME/DME RNP-0.3 NA. When local altimeter setting not received, use Shelby-Cleveland County Rgnl altimeter setting and increase all DA 77 feet, all MDA 80 feet, and increase LPV all Cats, LNAV/VNAV all Cats, LNAV Cats C/D and Circling Cats C/D visibility ¼ mile. VDP NA with Shelby-Cleveland County Rgnl altimeter setting.

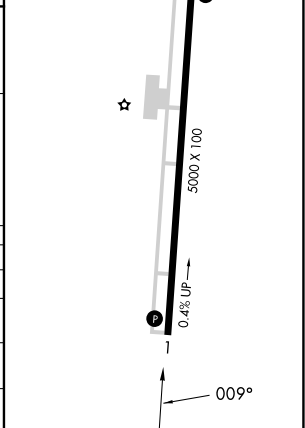
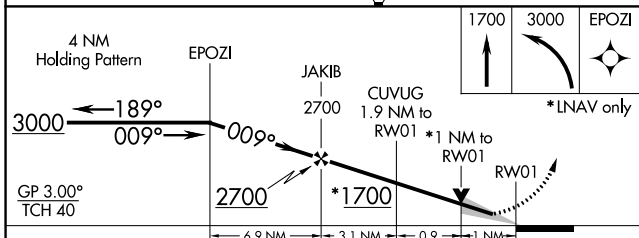
**MISSED APPROACH:** Climb to 1700 then climbing left turn to 3000 direct EPOZI and hold.

AWOS-3 <b>118.275</b>	GREER APP CON ★ <b>119.4 350.2</b>	UNICOM <b>122.8 (CTAF) 0</b>
--------------------------	---------------------------------------	---------------------------------



Procedure NA for arrivals at SPA VORTAC on V605 southbound.

ELEV 1077	TDZE 1059
REIL Rwy 1 and 19	MIRL Rwy 1-19



CATEGORY	A	B	C	D
LPV DA		1309-7/8	250 (300-7/8)	
LNAV/VNAV DA		1459-13/8	400 (400-13/8)	
LNAV MDA		1420-1	361 (400-1)	
<b>C</b> CIRCLING	1560-1 483 (500-1)	1620-1 543 (600-1)	1640-1½ 563 (600-1½)	1820-2½ 743 (800-2½)

SE-2, 13 JUN 2024 to 11 JUL 2024

SE-2, 13 JUN 2024 to 11 JUL 2024