

OLIVIA, MINNESOTA

AL-6301 (FAA)

23110

VOR/DME RWF 113.3 Chan 80	APP CRS 005°	Rwy Idg TDZE Apt Elev N/A N/A 1076
---	------------------------	--

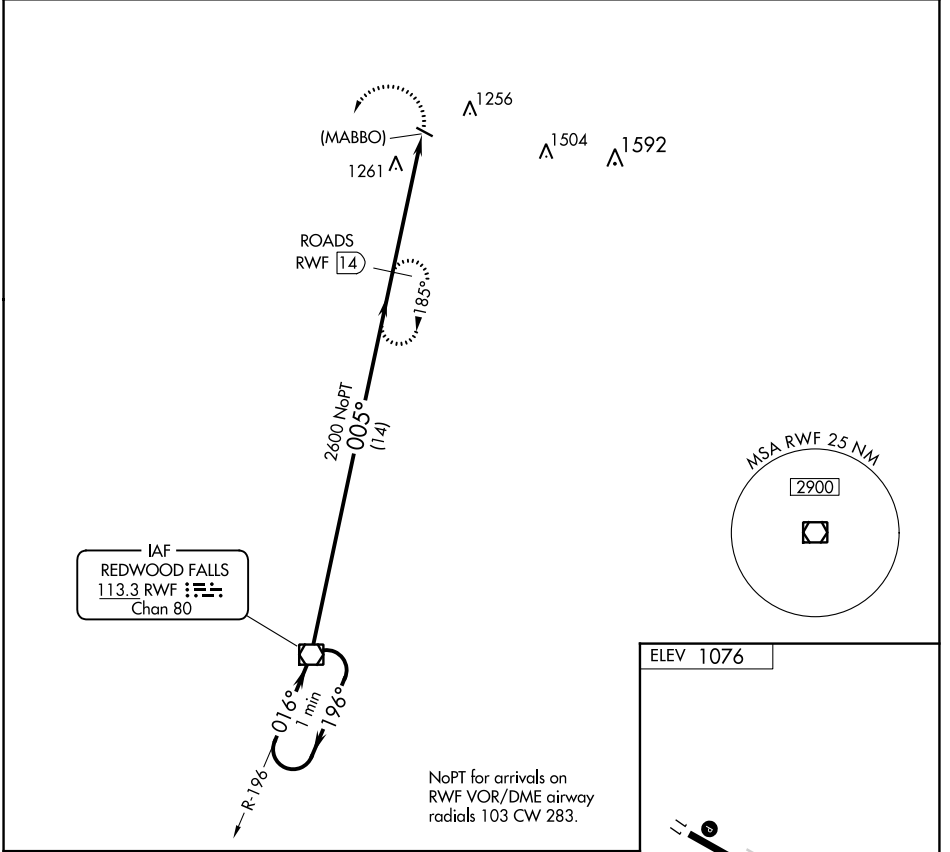
VOR/DME or GPS-A

OLIVIA RGNL (OVL)

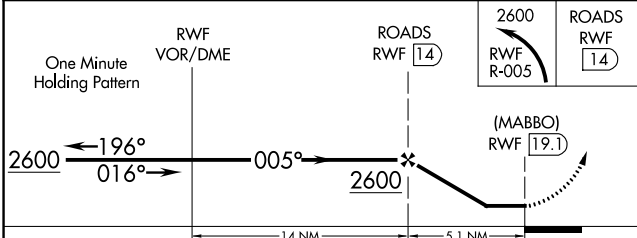
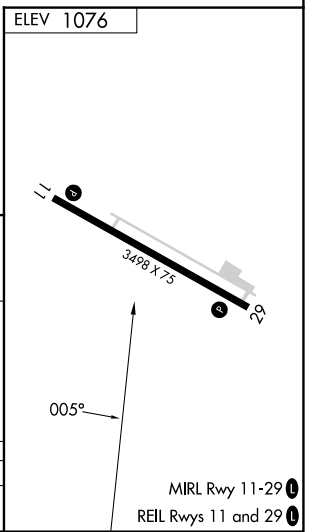
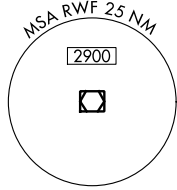
NA

MISSED APPROACH: Climbing left turn to 2600 via RWF R-005 to ROADS 14 DME and hold.

AWOS-3 119.275	MINNEAPOLIS CENTER 127.1 290.2	UNICOM 122.8 (CTAF)
--------------------------	--	-------------------------------



IAF
REDWOOD FALLS
113.3 RWF
Chan 80



CATEGORY	A	B	C	D
CIRCLING	1620-1	544 (600-1)	1720-1¾ 644 (700-1¾)	1720-2 644 (700-2)

OLIVIA, MINNESOTA
Amdt 2B 27FEB20

44°47'N-95°02'W

VOR/DME or GPS-A

NC-1, 13 JUN 2024 to 11 JUL 2024

NC-1, 13 JUN 2024 to 11 JUL 2024