

WAAS CH 65720 W15A	APP CRS 152°	Rwy ldg 5100 TDZE 58 Apt Elev 58
--	------------------------	---

RNAV (GPS) RWY 15

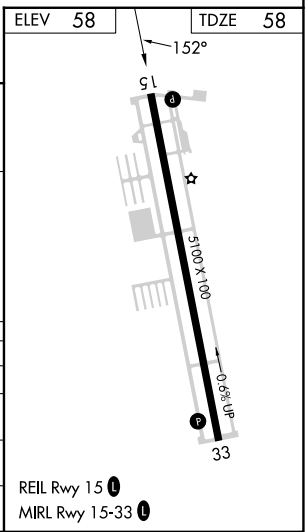
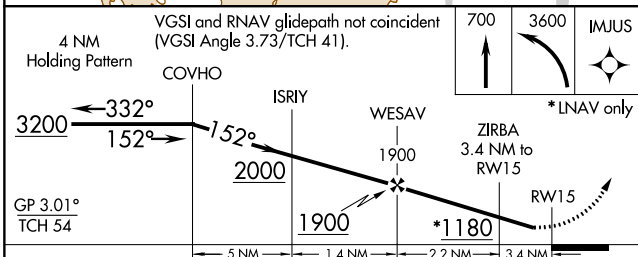
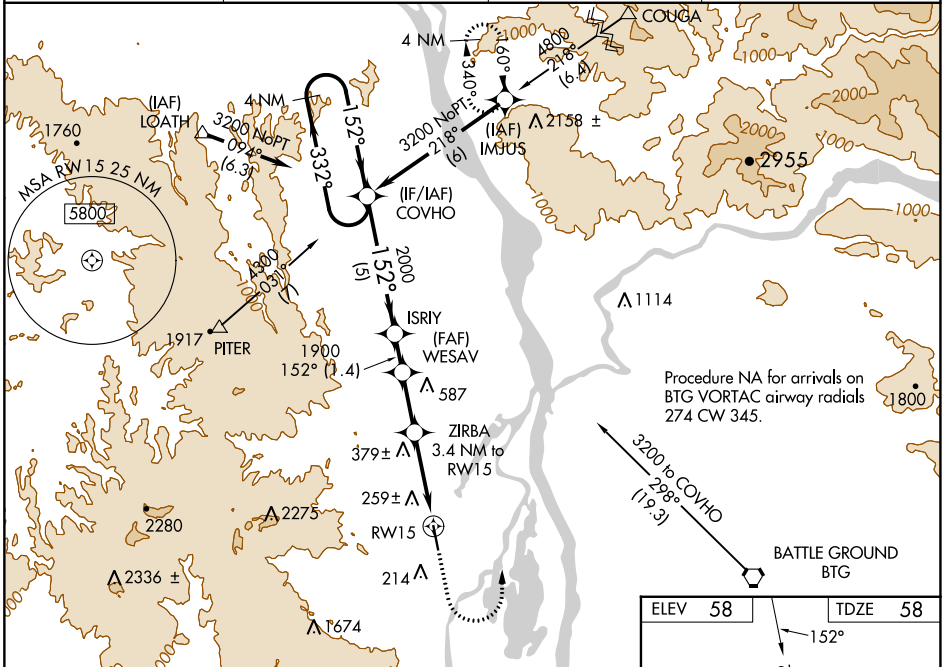
SCAPOOSE (SPB)

RNP APCH-GPS.

⚠ Circling NA west of Rwy 15-33. Rwy 15 helicopter visibility reduction below 1 SM NA. When VGSI inop, Straight-in and Circling to Rwy 15 NA at night. When local altimeter setting not received, use Portland Intl altimeter setting; increase all DA/MDA 40 feet and increase LNAV/VNAV all Cats visibility 1/8 SM, Circling Cat D visibility 1/4 SM. For uncompensated Baro-VNAV systems, LNAV/VNAV NA below -15°C (5°F) or above 42°C (107°F).

⚠ MISSED APPROACH: Climb to 700 then climbing left turn to 3600 direct IMJUS and hold.

ASOS 135.875	PORTLAND APP CON 124.35 299.2	CLNC DEL 121.65	UNICOM 122.8 (CTAF) 0
------------------------	---	---------------------------	---------------------------------



CATEGORY	A	B	C	D
LPV DA	350-1 292 (300-1)			
LNAV/VNAV DA	580-1 522 (600-1 3/4)			
LNAV MDA	640-1 582 (600-1)		640-1 582 (600-1 3/4)	
CIRCLING	660-1 602 (700-1)		660-1 860-2 802 (900-2 1/2)	

NW-1, 13 JUN 2024 to 11 JUL 2024

NW-1, 13 JUN 2024 to 11 JUL 2024