

VORTAC BTG 116.6 Chan 113	APP CRS 255°	Rwy Idg TDZE Apt Elev N/A 58
---	------------------------	--

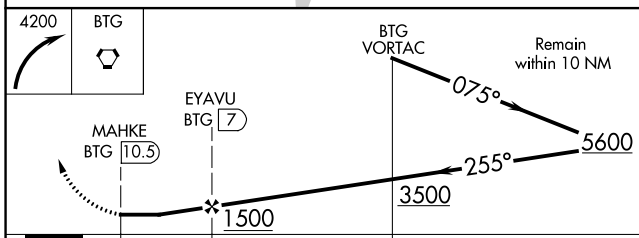
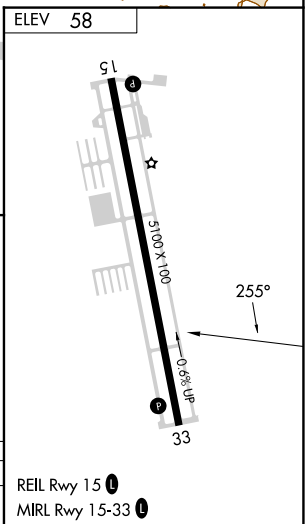
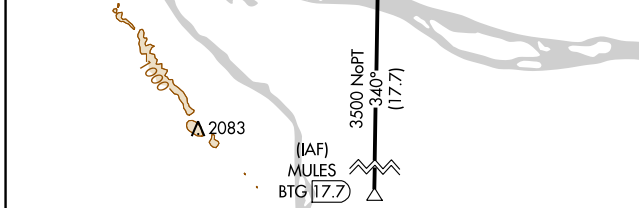
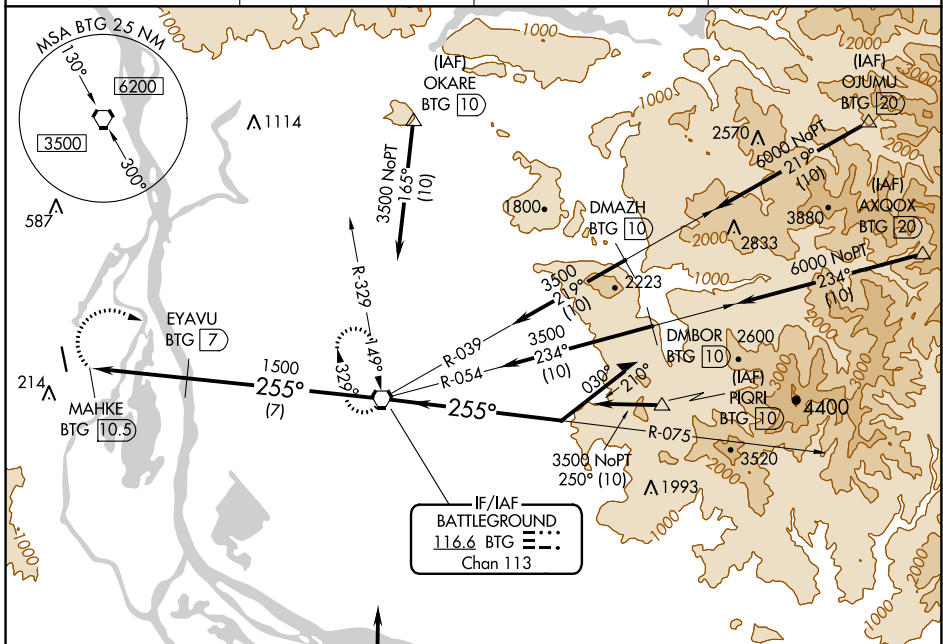
VOR/DME-A

SCAPOOSE (SPB)

⚠ Circling to Rwy 15 NA at night. Circling NA west of Rwy 15-33. When local altimeter setting not received, use Portland Intl altimeter setting; increase all MDAs 40 feet. Increase Circling Cat D visibility ¼ SM.

⚠ MISSED APPROACH: Climbing right turn to 4200 direct BTG VORTAC and hold, continue climb-in-hold to 4200.

ASOS 135.875	PORTLAND APP CON 124.35 299.2	CLNC DEL 121.65	UNICOM 122.8 (CTAF) 📞
------------------------	---	---------------------------	--



CATEGORY	A	B	C	D
CIRCLING	660-1 602 (700-1)		660-1¾ 602 (700-1¾)	860-2½ 802 (900-2½)

REIL Rwy 15 **📞**
MIRL Rwy 15-33 **📞**

NW-1, 13 JUN 2024 to 11 JUL 2024

NW-1, 13 JUN 2024 to 11 JUL 2024