

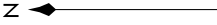
KINGDOM FOUR DEPARTURE

SC-2, 13 JUN 2024 to 11 JUL 2024

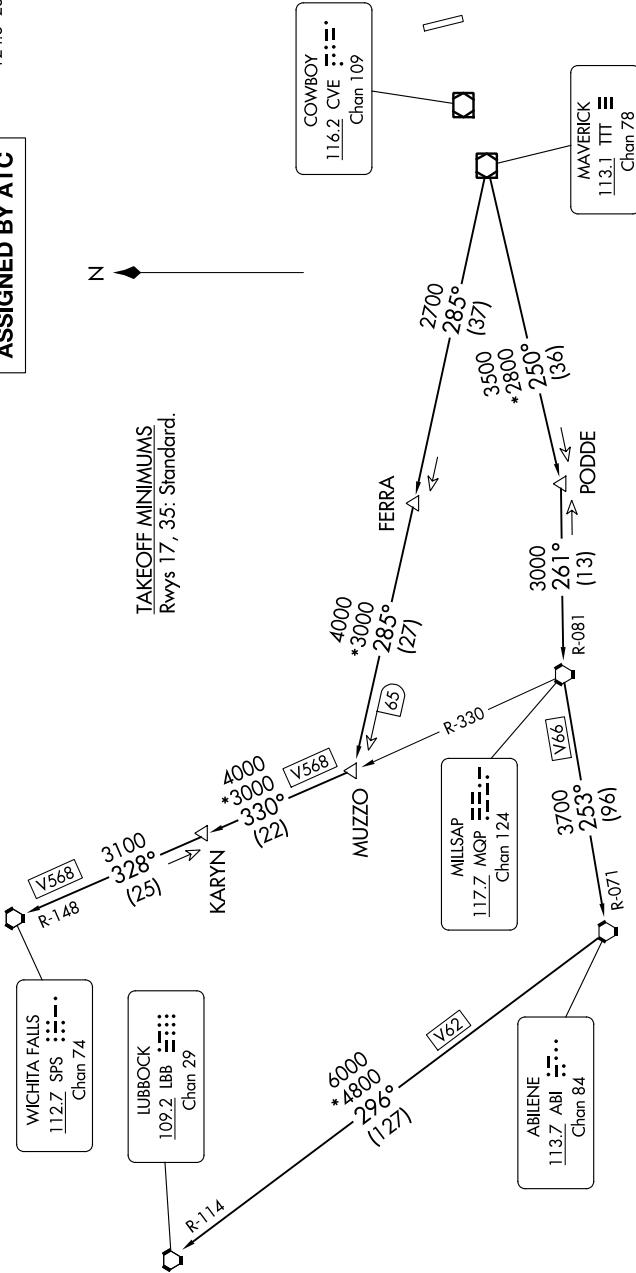
RADAR and DME required.

**TOP ALTITUDE:
ASSIGNED BY ATC**

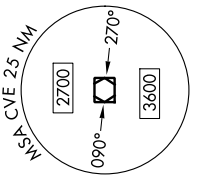
REGIONAL DEP CON
124.3 282.275
CTAF
122.8



TAKEOFF MINIMUMS
Rwys 17, 35: Standard.



- NOTE: LUBBOCK Transition: For all aircraft overlying the MQP VORTAC westbound or direct.
- NOTE: MILLSAP Transition: For all aircraft overlying the MQP VORTAC westbound or direct.
- NOTE: PODDE Transition: ATC assigned.
- NOTE: WICHITA FALLS Transition: For all aircraft landing within the Wichita Falls terminal area or overlying the SPS VORTAC.
- NOTE: For all aircraft requesting 17000 and below.



NOTE: Chart not to scale.

(CONTINUED ON FOLLOWING PAGE)

SC-2, 13 JUN 2024 to 11 JUL 2024

KINGDOM FOUR DEPARTURE