

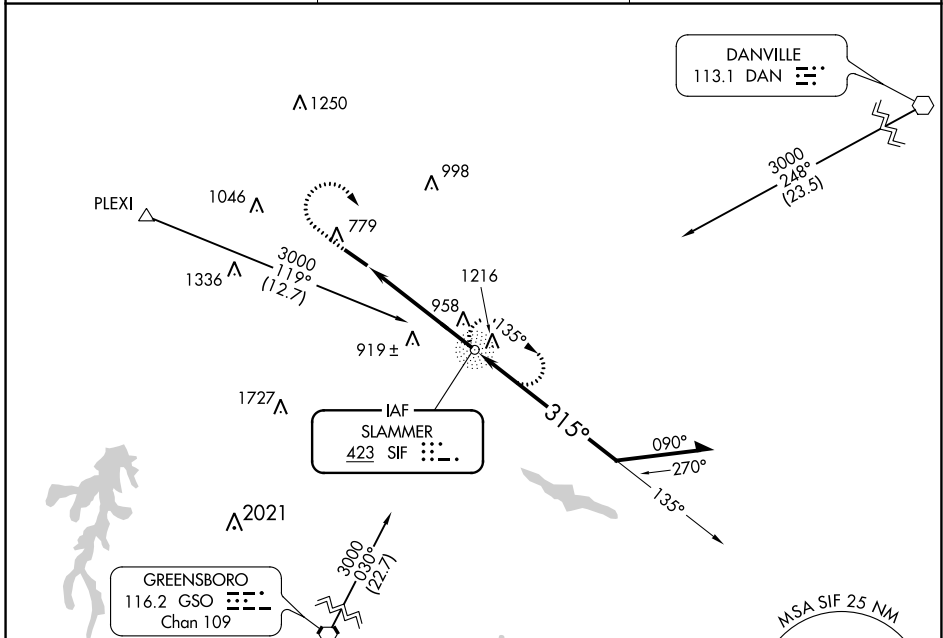
NDB SIF	APP CRS	Rwy Idg	5200
423	315°	TDZE	668
		Apt Elev	694

NDB RWY 31

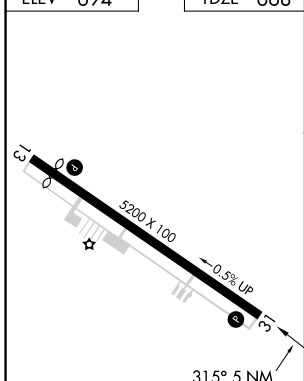
ROCKINGHAM COUNTY NC SHILOH (SIF')

▼ Rwy 31 helicopter visibility reduction below 1 SM NA. **▲** MISSED APPROACH: Climb to 1600 then climbing right turn to 2600 direct SIF NDB and hold.

AWOS-3 119.775	GREENSBORO APP CON 124.35 269.225	UNICOM 122.8 (CTAF) 0
--------------------------	---	---------------------------------



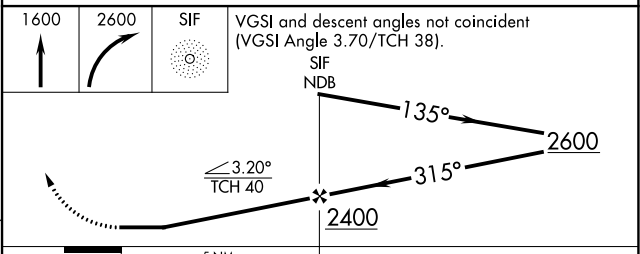
ELEV 694	TDZE 668
----------	----------



REIL Rwy 13 and 31 **0**
HIRL Rwy 13-31 **0**

FAF to MAP 5 NM

Knots	60	90	120	150	180
Min:Sec	5:00	3:20	2:30	2:00	1:40



CATEGORY	A	B	C	D
S-31	1220-1	552 (600-1)	1220-1½ 552 (600-1½)	1220-1¾ 552 (600-1¾)
CIRCLING	1280-1 586 (600-1)	1320-1 626 (700-1)	1360-1¾ 666 (700-1¾)	1420-2¼ 726 (800-2¼)

NDB RWY 31

SE-2, 13 JUN 2024 to 11 JUL 2024

SE-2, 13 JUN 2024 to 11 JUL 2024