

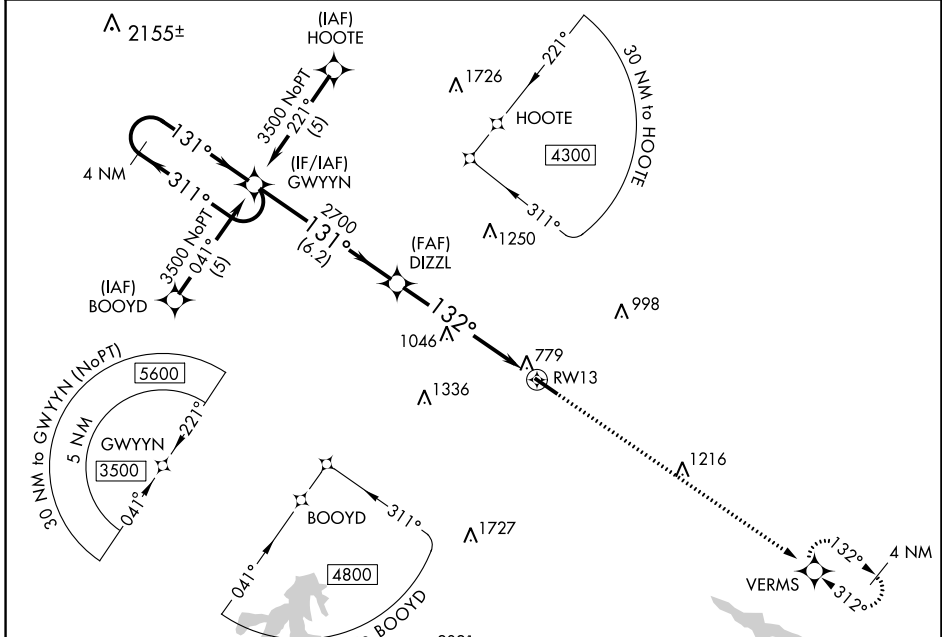
APP CRS	Rwy Idg	4700
132°	TDZE	691
	Apt Elev	694

RNAV (GPS) RWY 13

ROCKINGHAM COUNTY NC SHILOH (SIF')

RNP APCH.
 ▼ Rwy 13 helicopter visibility reduction below 1 SM NA.
 ▲ Procedure NA at night.
 MISSED APPROACH: Climb to 3600 direct VERMS and hold.

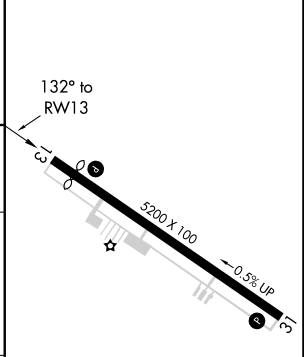
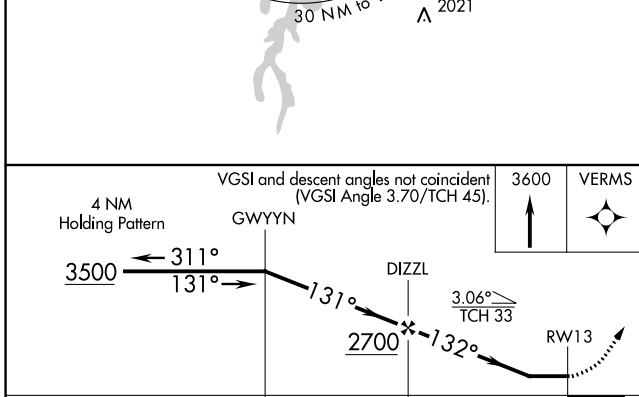
AWOS-3 119.775	GREENSBORO APP CON 124.35 269.225	UNICOM 122.8 (CTAF) 1
--------------------------	---	---------------------------------



SE-2, 13 JUN 2024 to 11 JUL 2024

SE-2, 13 JUN 2024 to 11 JUL 2024

ELEV	694	TDZE	691
------	-----	------	-----



CATEGORY	A	B	C	D	
LNVA MDA	1300-1	609 (700-1)	1300-1¼ 609 (700-1¾)	1300-2 609 (700-2)	
CIRCLING	1300-1 606 (700-1)	1320-1 626 (700-1)	1360-1¼ 666 (700-1¾)	1420-2¼ 726 (800-2¼)	REIL Rwy 13 and 31 1 HIRL Rwy 13-31 1