

WAAS CH <b>81999</b> <b>W36A</b>	APP CRS <b>356°</b>	Rwy Idg <b>5006</b> TDZE <b>472</b> Apt Elev <b>474</b>
--	------------------------	---

# RNAV (GPS) RWY 36

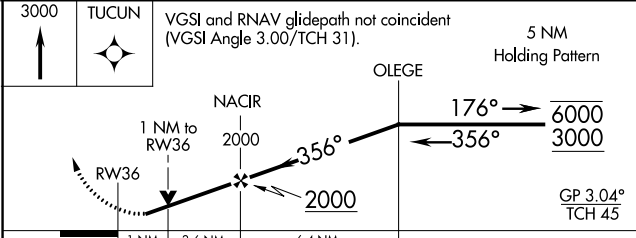
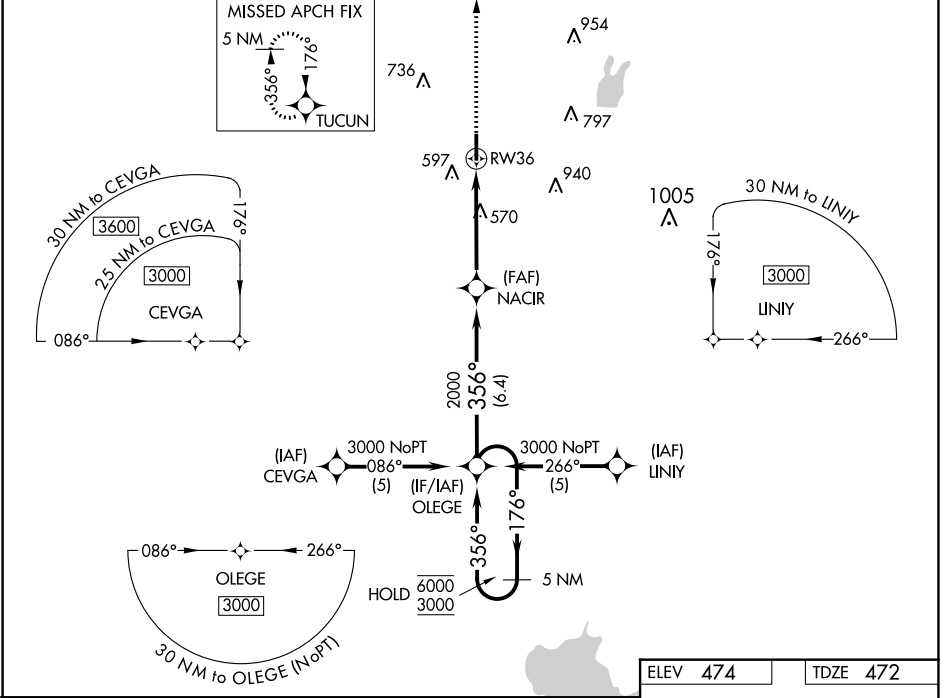
TERRELL MUNI (T.R.L.)

RNP APCH - GPS.

**▼** Rwy 36 helicopter visibility reduction below 3/4 SM NA.  
**▲** For uncompensated Baro-VNAV systems, LNAV/VNAV NA below -7°C or above 54°C.

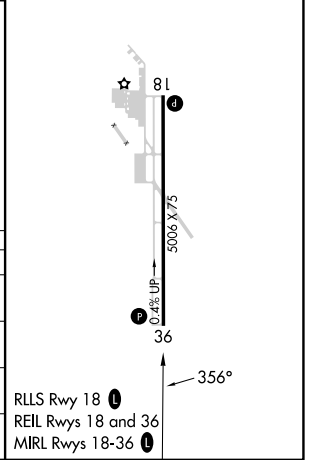
MISSED APPROACH: Climb to 3000 direct TUCUN and hold.

ASOS <b>119.275</b>	FORT WORTH CENTER <b>132.025 360.75</b>	UNICOM <b>123.075 (CTAF) 0</b>
------------------------	--	-----------------------------------



ELEV <b>474</b>	TDZE <b>472</b>
-----------------	-----------------

CATEGORY	A	B	C	D
LPV DA	730-3/4	258 (300-3/4)		NA
LNAV/VNAV DA	801-1	329 (400-1)		NA
LNAV MDA	820-1	348 (400-1)		NA
<b>C</b> CIRCLING	980-1 506 (600-1)	1020-1 546 (600-1)	1100-1 1/4 626 (700-1 1/4)	NA



SC-2, 13 JUN 2024 to 11 JUL 2024

SC-2, 13 JUN 2024 to 11 JUL 2024