

WAAS CH <b>65635</b> <b>W36A</b>	APP CRS <b>357°</b>	Rwy Idg TDZE <b>415</b> Apt Elev <b>415</b>	<b>3998</b>
--	------------------------	---	-------------

# RNAV (GPS) RWY 36

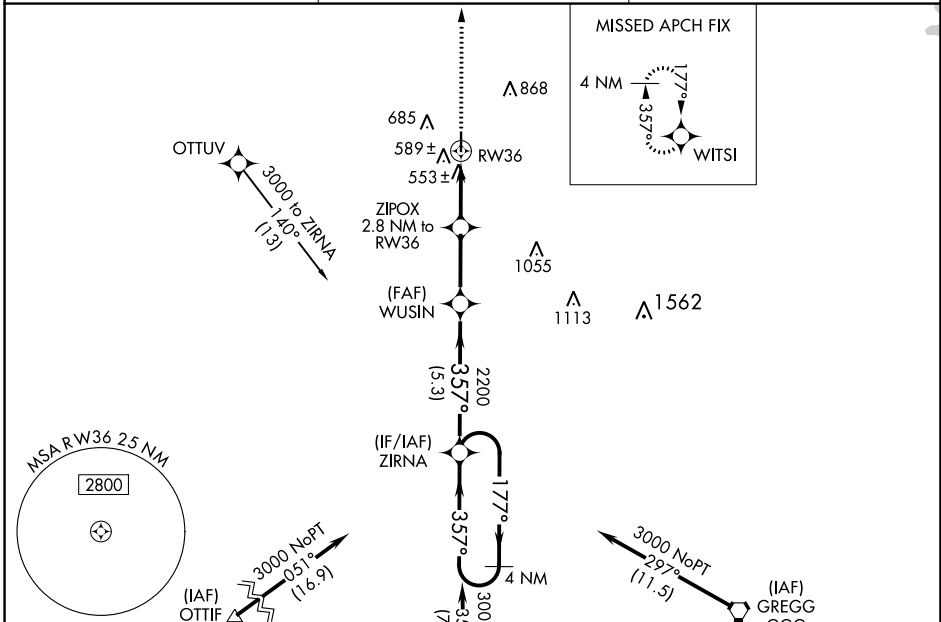
FOX STEPHENS FLD/GILMER MUNI (JXI)

**RNP APCH.**

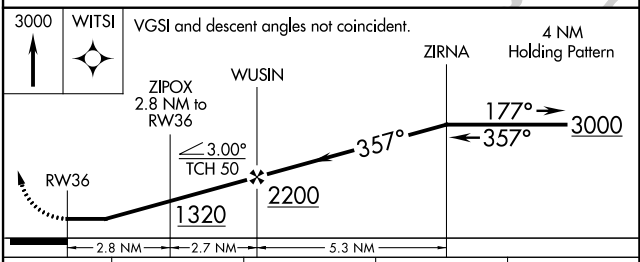
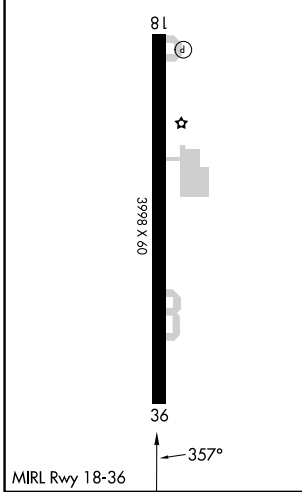
When local altimeter setting not received, use Longview altimeter setting and increase all MDA 60 feet and all Cat C visibilities ¼ mile. Rwy 36 helicopter visibility reduction below 1 SM NA. Procedure NA at night.

**MISSED APPROACH:**  
Climb to 3000 direct WITSI and hold.

<b>AWOS-3PT</b> <b>120.250</b>	<b>LONGVIEW APP CON *</b> <b>124.275 257.975</b>	<b>CTAF</b> <b>122.9</b>
-----------------------------------	---	-----------------------------



ELEV <b>415</b>	TDZE <b>415</b>
-----------------	-----------------



CATEGORY	A	B	C	D
LP MDA	820-1	405 (500-1)	820-1 1/8 405 (500-1 1/8)	NA
LNAV MDA	840-1	425 (500-1)	840-1 1/4 425 (500-1 1/4)	NA
CIRCLING	1000-1 585 (600-1)	1060-1 645 (700-1)	1180-2 1/4 765 (800-2 1/4)	NA

SC-2, 13 JUN 2024 to 11 JUL 2024

SC-2, 13 JUN 2024 to 11 JUL 2024