

| | | |
|-------------|----------|-------------|
| APP CRS | Rwy Idg | 3013 |
| 167° | TDZE | 13 |
| | Apt Elev | 13 |

RNAV (GPS) RWY 17

DARE COUNTY RGNL (MQI)

RNP APCH - GPS.

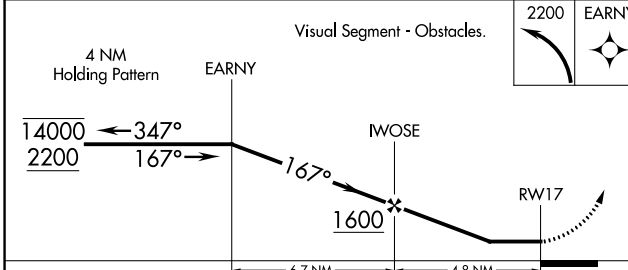
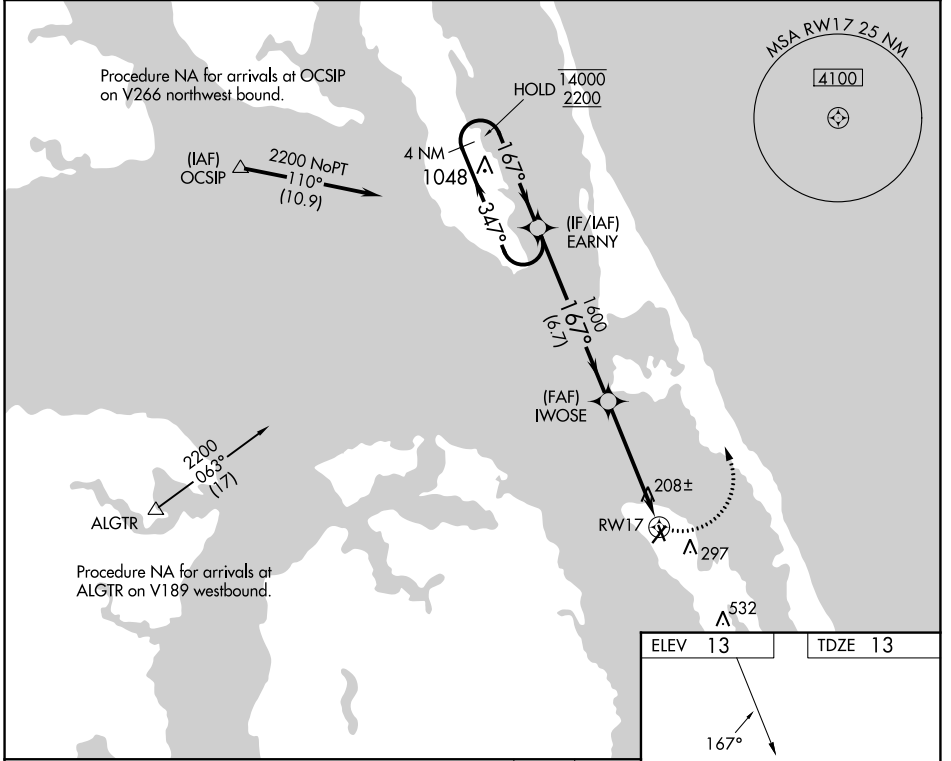
⚠ Circling Rwy 23, 35 NA at night. Rwy 17 helicopter visibility reduction below 1 SM NA. Straight-in and Circling Rwy 17 NA at night.

MISSED APPROACH: Climbing left turn to 2200 direct EARNY and hold.

AWOS-3
128.275

CHERRY POINT APP CON
124.725 350.35

UNICOM
122.8(CTAF) 0



| | |
|---------|---------|
| ELEV 13 | TDZE 13 |
|---------|---------|

REIL Rwy 5 0
MIRL Rwy 5-23 and 17-35 0

| CATEGORY | A | B | C | D |
|-------------------|-------|-------------|---|----|
| LNAV MDA | 460-1 | 447 (500-1) | 460-1 ³ / ₈ 447 (500-1 ³ / ₈) | NA |
| C CIRCLING | 600-1 | 587 (600-1) | 600-1 ¹ / ₂ 587 (600-1 ¹ / ₂) | NA |

SE-2, 13 JUN 2024 to 11 JUL 2024

SE-2, 13 JUN 2024 to 11 JUL 2024