

APP CRS	Rwy Idg	4005
227°	TDZE	12
	Apt Elev	13

RNAV (GPS) RWY 23

DARE COUNTY RGNL (MQI)

RNP APCH - GPS.

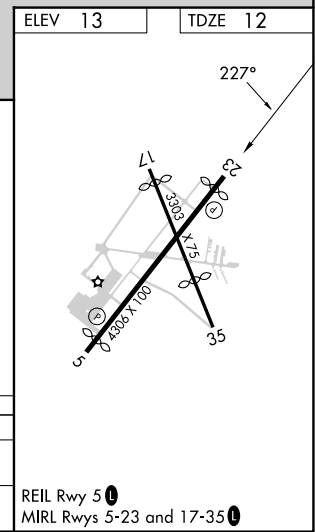
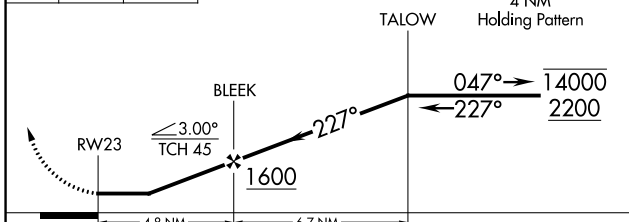
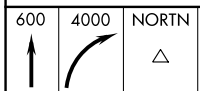
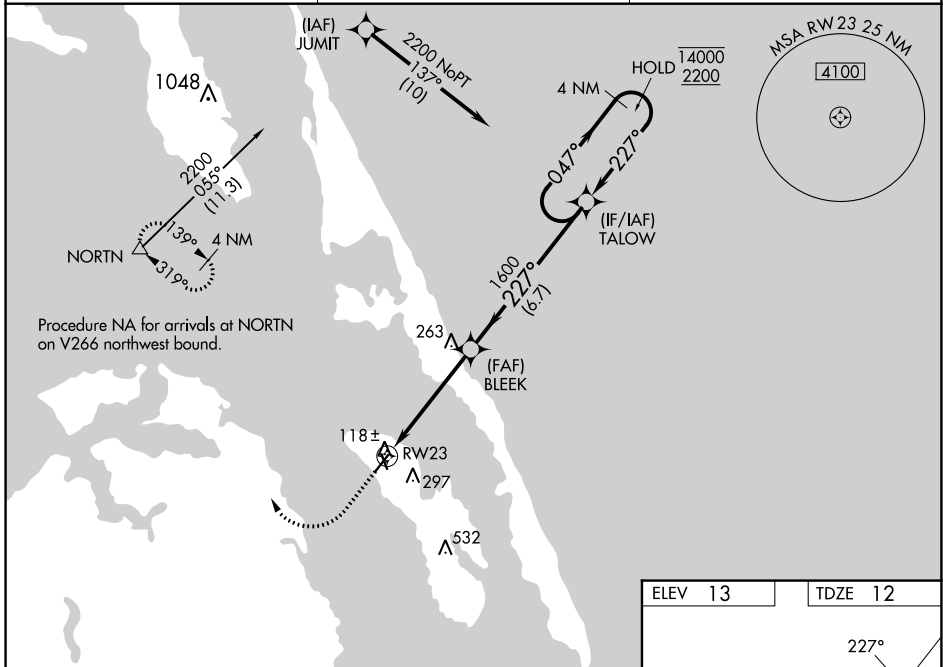
⚠
⚠ Circling Rwy 17, 35 NA at night. Rwy 23 helicopter visibility reduction below 1 SM NA. Straight-in/Circling Rwy 23 NA at night.

MISSED APPROACH: Climb to 600 then climbing right turn to 4000 direct NORTN and hold, continue climb-in-hold to 4000.

AWOS-3
128.275

CHERRY POINT APP CON
124.725 350.35

UNICOM
122.8(CTAF) 0



CATEGORY	A	B	C	D
LNVA MDA	520-1	508 (600-1)	520-1 $\frac{3}{8}$ 508 (600-1 $\frac{3}{8}$)	NA
C CIRCLING	600-1	587 (600-1)	600-1 $\frac{1}{2}$ 587 (600-1 $\frac{1}{2}$)	NA

SE-2, 13 JUN 2024 to 11 JUL 2024

SE-2, 13 JUN 2024 to 11 JUL 2024