

WAAS CH <b>72630</b> <b>W11A</b>	APP CRS <b>111°</b>	Rwy Idg TDZE <b>1152</b> Apt Elev <b>1171</b>	<b>5001</b>
--	------------------------	---	-------------

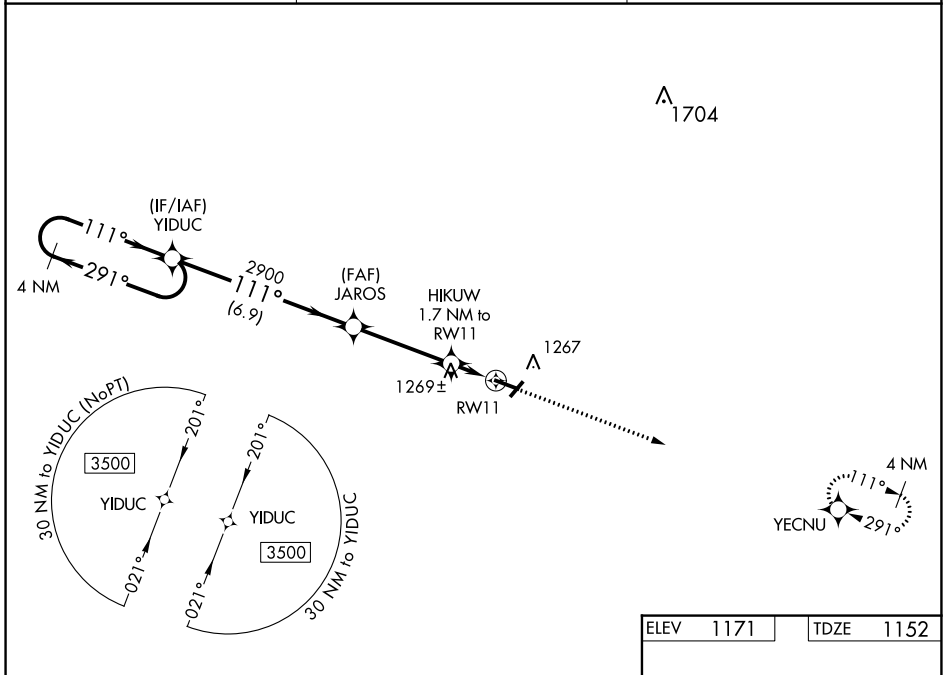
# RNAV (GPS) RWY 11

IOWA COUNTY (MRJ)

**⚠** Baro-VNAV NA when using Platteville altimeter setting. For uncompensated Baro-VNAV systems, LNAV/VNAV NA below -17°C (2°F) or above 54°C (130°F). When local altimeter setting not received, use Platteville altimeter setting and increase all DA 55 feet, increase LPV and LNAV/VNAV all Cats visibility 1/8 mile, increase all MDA 60 feet, and LNAV Cat C visibility 1/4 mile. DME/DME RNP-0.3 NA.

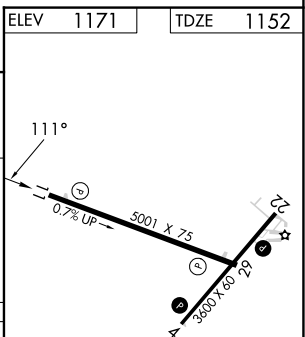
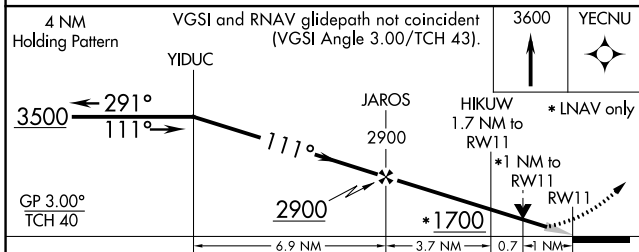
**MISSED APPROACH:**  
Climb to 3600 direct YECNU and hold.

AWOS-3 <b>118.525</b>	CHICAGO CENTER <b>133.95 281.4</b>	UNICOM <b>122.8 (CTAF) 0</b>
--------------------------	---------------------------------------	---------------------------------



EC-3, 13 JUN 2024 to 11 JUL 2024

EC-3, 13 JUN 2024 to 11 JUL 2024



CATEGORY	A	B	C	D
LPV DA	1352-3/4	200 (200-3/4)		NA
LNAV/VNAV DA	1402-7/8	250 (300-7/8)		NA
LNAV MDA	1520-1	368 (400-1)	1520-1 1/8 368 (400-1 1/8)	NA
CIRCLING	1620-1 449 (500-1)	1640-1 469 (500-1)	1640-1 1/2 469 (500-1 1/2)	NA

REIL Rwy 11 and 29 **0**  
MIRL Rwy 4-22 and 11-29 **0**