

| | | | |
|--|------------------------|---|-------------|
| WAAS CH 93530 W04A | APP CRS 040° | Rwy Idg TDZE 1168 Apt Elev 1171 | 3600 |
|--|------------------------|---|-------------|

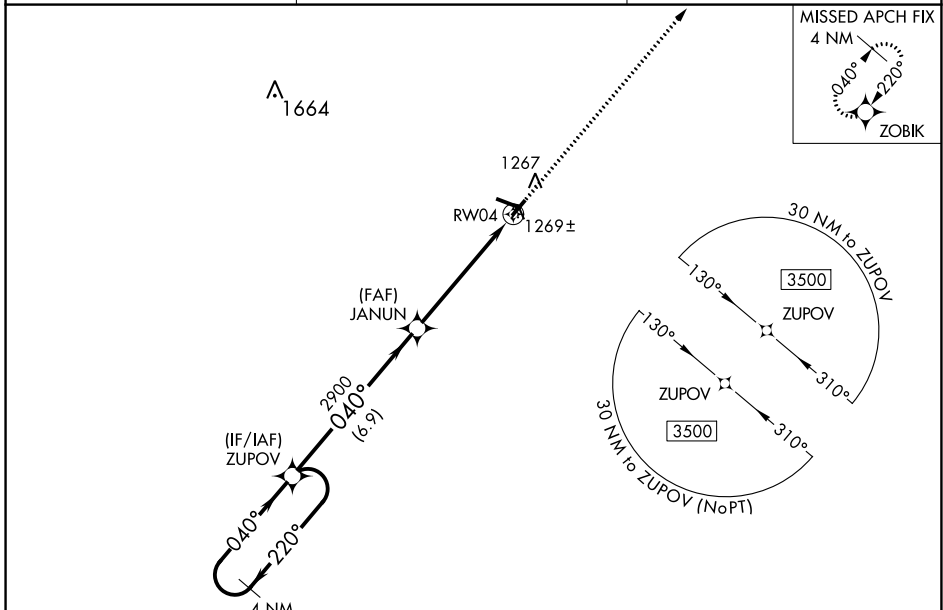
RNAV (GPS) RWY 4

IOWA COUNTY (MRJ)

Baro-VNAV NA when using Platteville altimeter setting. For uncompensated Baro-VNAV systems, LNAV/VNAV NA below -17°C (2°F) or above 54°C (130°F). When local altimeter setting not received, use Platteville altimeter setting and increase all DA 55 feet, increase LPV all Cats visibility 1/8 mile and LNAV/VNAV all Cats visibility 1/4 mile, increase all MDA 60 feet, and LNAV Cat C visibility 1/4 mile. DME/DME RNP-0.3 NA.

MISSED APPROACH:
Climb to 3600 direct ZOBIK and hold.

| | | |
|--------------------------|---------------------------------------|--|
| AWOS-3 118.525 | CHICAGO CENTER 133.95 281.4 | UNICOM 122.8 (CTAF) 1 |
|--------------------------|---------------------------------------|--|



EC-3, 13 JUN 2024 to 11 JUL 2024

EC-3, 13 JUN 2024 to 11 JUL 2024

| | | | | | |
|----------------------|-----------------------|--|-------------------------------|-------------|-----------|
| 4 NM Holding Pattern | | VGSI and RNAV glidepath not coincident (VGSI Angle 3.00/TCH 31). | | ELEV 1171 | TDZE 1168 |
| ZUPOV | | JANUN | RWY 4 | 3600 | ZOBIK |
| GP 3.00° TCH 40 | | 2900 | *1.2 NM to RWY 4 | ↑ | ✦ |
| ← 220° / 040° → | | ← 040° → | ← 040° → | * LNAV only | |
| 6.9 NM | | 4.1 NM | 1.2 NM | * 0.7% UP | |
| CATEGORY | A | B | C | D | |
| LPV DA | 1368-3/4 | | 200 (200-3/4) | NA | |
| LNAV/VNAV DA | 1443-7/8 | | 275 (300-7/8) | NA | |
| LNAV MDA | 1580-1 | 412 (500-1) | 1580-1 1/8 412 (500-1 1/8) | NA | |
| CIRCLING | 1620-1 449 (500-1) | 1640-1 469 (500-1) | 1640-1 1/2 469 (500-1 1/2) | NA | |

