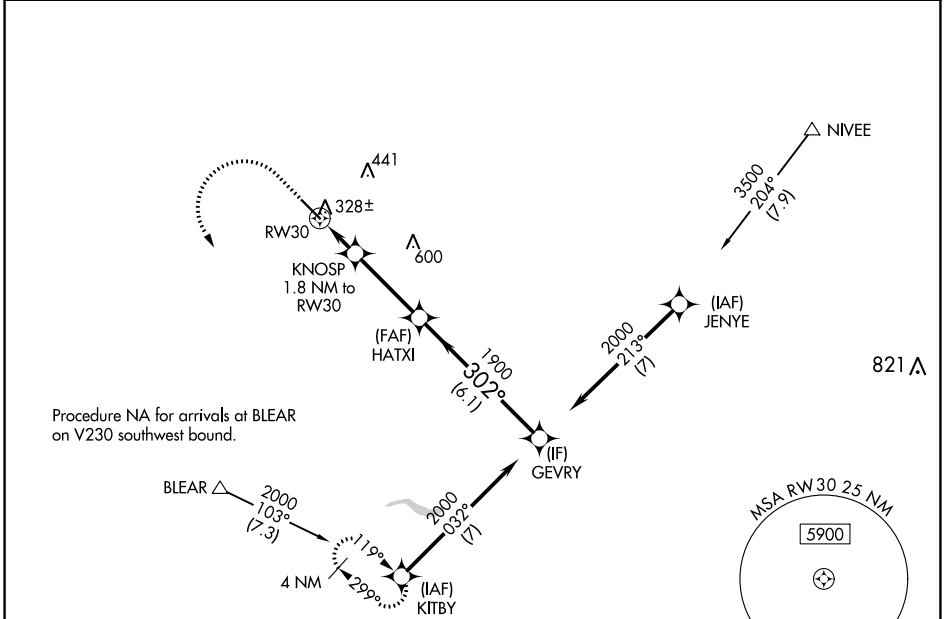


WAAS CH <b>90209</b> <b>W30A</b>	APP CRS <b>302°</b>	Rwy Idg TDZE <b>255</b> Apt Elev <b>255</b>	<b>5545</b> <b>255</b> <b>255</b>
--	------------------------	---	---

# RNAV (GPS) RWY 30

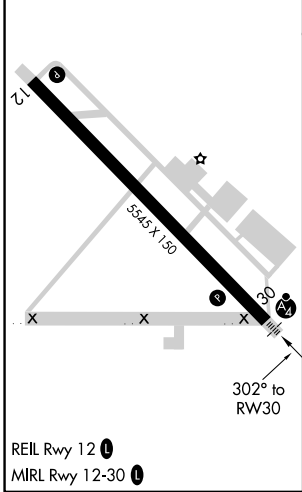
MADERA MUNI (M.A.E.)

RNP APCH - GPS.		MALSF 	MISSED APPROACH: Climb to 800 then climbing left turn to 2000 to KITBY and hold.	
For uncompensated Baro-VNAV systems, LNAV/VNAV NA below -2°C or above 54°C. Inop table does not apply to LPV and LNAV/VNAV Cat A/B/C.				
ASOS <b>134.725</b>	FRESNO APP CON <b>119.45</b>	CINC DEL <b>119.45</b>	UNICOM <b>122.8 (CTAF) 0</b>	



Procedure NA for arrivals at BLEAR on V230 southwest bound.

ELEV 255	TDZE 255
----------	----------



800	2000	KITBY	VGSI and RNAV glidepath not coincident (VGSI Angle 3.00/TCH 34).	
KNOSP 1.8 NM to RWY 30		HATXI 1900	GEVRY 2000	
1.1 NM to RWY 30		860	302°	GP 3.00° TCH 35
1.1 NM   0.7 NM   3.3 NM   6.1 NM				
CATEGORY	A	B	C	D
LPV DA	505-¾ 250 (300-¾)			NA
LNAV/VNAV DA	505-¾ 250 (300-¾)			NA
LNAV MDA	640-¾	385 (400-¾)	640-⅞ 385 (400-⅞)	NA
CIRCLING	680-1 425 (500-1)	720-1 465 (500-1)	760-1½ 505 (600-1½)	NA

SW-2, 13 JUN 2024 to 11 JUL 2024

SW-2, 13 JUN 2024 to 11 JUL 2024