

APP CRS	Rwy Idg	<b>3302</b>
<b>024°</b>	TDZE	<b>1185</b>
	Apt Elev	<b>1188</b>

# RNAV (GPS) RWY 2

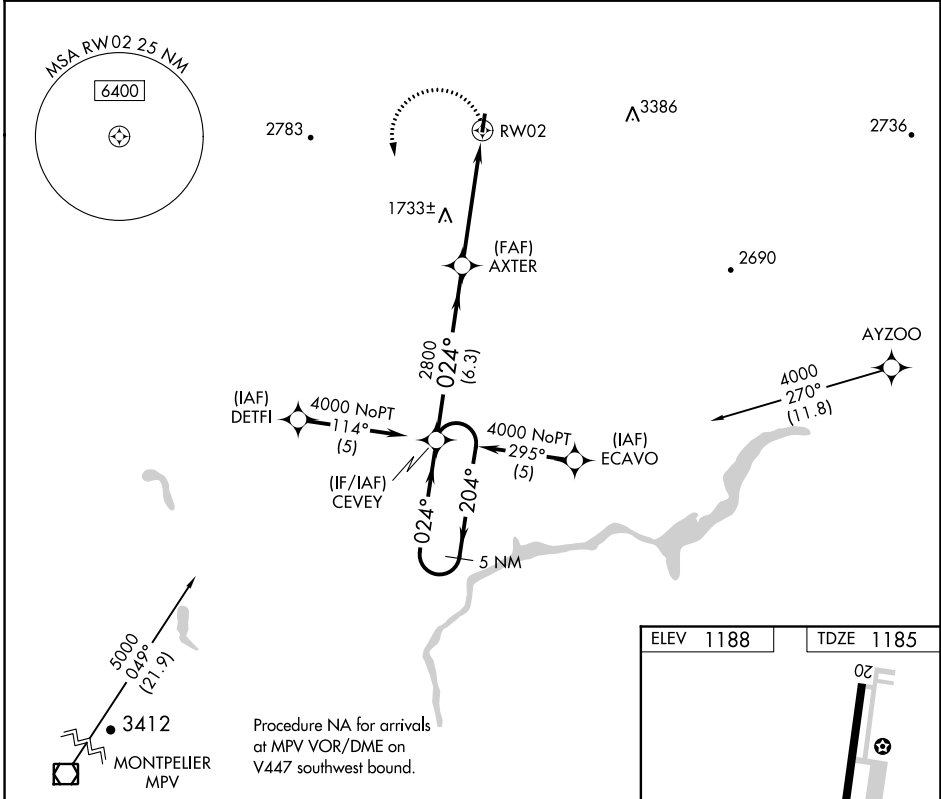
CALEDONIA COUNTY (CDA)

RNP APCH - GPS.

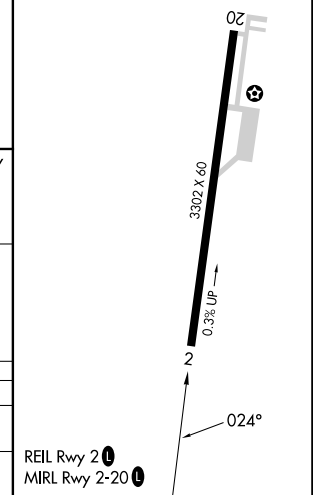
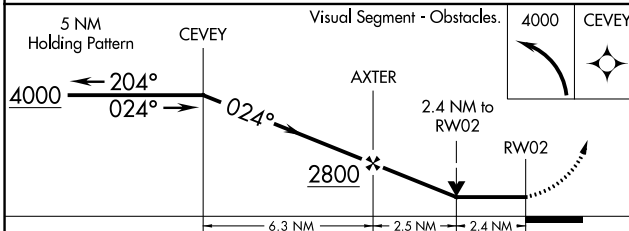
▼ When local altimeter setting not received, use Whitefield altimeter setting:  
 ▲ increase all MDA 80 feet and visibility LNAV Cat A and Circling Cat A ¼ SM.  
 ▲ Circling Rwy 20 NA at night.

MISSED APPROACH: Climbing left turn to 4000 direct CEVEY and hold.

AWOS-3 <b>119.275</b>	BOSTON CENTER <b>135.7 282.2</b>	UNICOM <b>122.8 (CTAF) 0</b>
--------------------------	-------------------------------------	---------------------------------



ELEV 1188	TDZE 1185
-----------	-----------



CATEGORY	A	B	C	D
LNAV MDA	2000-1 815 (900-1)	2000-1 ¼ 815 (900-1 ¼)		NA
CIRCLING	2000-1 812 (900-1)	2000-1 ¼ 812 (900-1 ¼)		NA

NE-1, 13 JUN 2024 to 11 JUL 2024

NE-1, 13 JUN 2024 to 11 JUL 2024