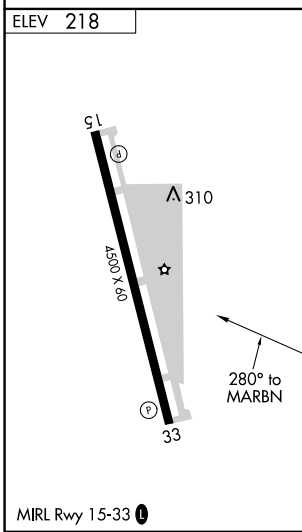
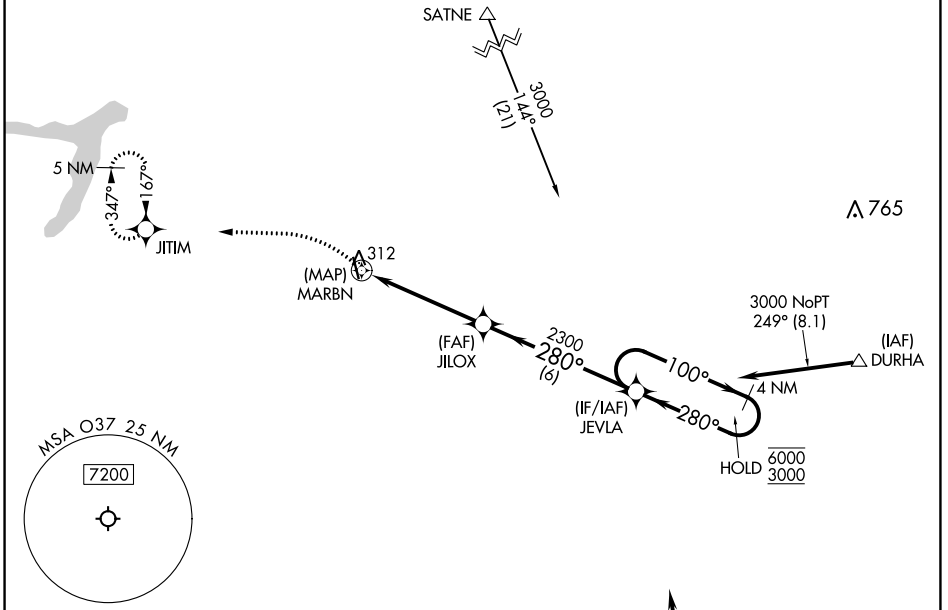


APP CRS	Rwy Idg	N/A
<b>280°</b>	TDZE	N/A
	Apt Elev	<b>218</b>

# RNAV (GPS)-A

HAIGH FLD (O37)

RNP APCH.	MISSED APPROACH: Climbing left turn to 4800 direct JITIM and hold, continue climb-in-hold to 4800.
<p>▼ Use Chico altimeter setting; when not received, use Redding altimeter setting and increase all MDA 120 feet. Increase visibility Cat C and D ¼ SM.</p> <p>▲ NA</p>	
OAKLAND CENTER <b>132.2 350.3</b>	UNICOM <b>122.7(CTAF) 1</b>



Procedure NA for arrivals at TALUM on V23-195 southeast bound.

CATEGORY	A	B	C	D
<b>C</b> CIRCLING	700-1	482 (500-1)	720-1½ 502 (600-1½)	820-2 602 (700-2)

SW-2, 13 JUN 2024 to 11 JUL 2024

SW-2, 13 JUN 2024 to 11 JUL 2024