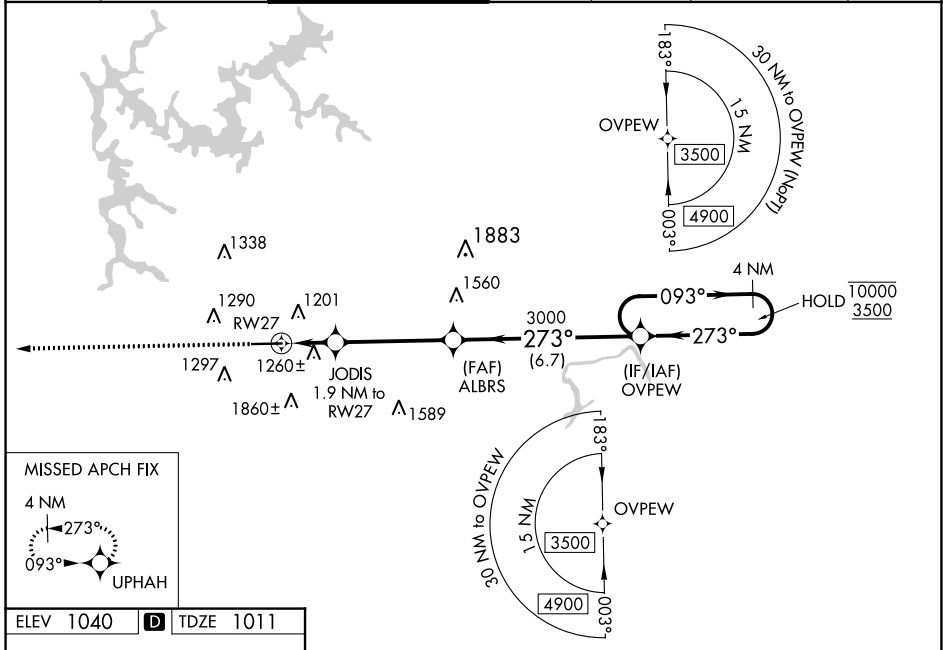


WAAS CH 97308 W27A	APP CRS 273°	Rwy Idg TDZE 1011 Apt Elev 1040	5374
--	------------------------	---	-------------

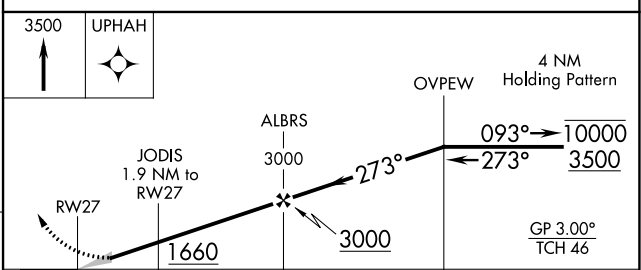
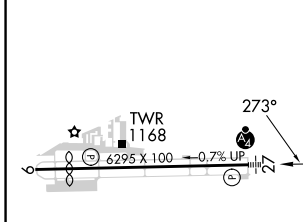
RNAV (GPS) RWY 27

COBB COUNTY INTL/MCCOLLUM FLD (RYY)

RNP APCH-GPS.				MALSF		MISSED APPROACH: Climb to 3500 direct UPHAH and hold.	
<p>⚠ Inop table does not apply to LPV. For uncompensated Baro-VNAV systems, LNAV/VNAV NA below -17°C or above 54°C. For inop ALS, increase LNAV/VNAV all Cats and LNAV Cats C and D visibility to 1½ SM. Circling Rwy 9 NA at night.</p>							
ATIS 128.125	ATLANTA APP CON 121.0 268.7	MCCOLLUM TOWER ★ 125.9 (CTAF) 0	GND CON 119.0	CLNC DEL 119.0	CLNC DEL 121.0 268.7 (When twr closed)	UNICOM 122.7	



ELEV 1040	D	TDZE 1011
------------------	----------	------------------



CATEGORY	A	B	C	D
LPV DA	1211-¾		200 (200-¾)	
LNAV/VNAV DA	1520-1¼		509 (500-1¼)	
LNAV MDA	1520-¾	509 (500-¾)	1520-1¼	509 (500-1¼)
C CIRCLING	1800-1	760 (800-1)	2180-3	1140 (1200-3)

SE-4, 13 JUN 2024 to 11 JUL 2024

SE-4, 13 JUN 2024 to 11 JUL 2024