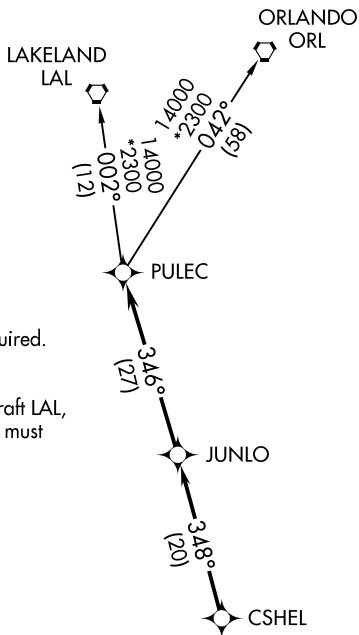


CSHEL SIX DEPARTURE (RNAV)

**TOP ALTITUDE:
2000**

CLNC DEL 120.8
FORT MYERS DEP CON* 124.125 371.85
UNICOM 122.7



- NOTE: RADAR required.
- NOTE: DME/DME/IRU or GPS required.
- NOTE: RNAV 1.
- NOTE: For turbojet aircraft only.
- NOTE: For non-GPS equipped aircraft LAL, LBV, RSW, and SRQ DME's must be operational.

TAKEOFF MINIMUMS
Rwy 17, 35: Standard.



NOTE: Chart not to scale.

DEPARTURE ROUTE DESCRIPTION

TAKEOFF RWY 17: Climb on assigned heading for RADAR vectors to CSHEL, then on depicted route to PULEC, thence. . . .

TAKEOFF RWY 35: Climb heading 005° to 700, then on RADAR vectors to CSHEL, then on depicted route to PULEC, thence. . . .

. . . on (transition). Maintain 2000, or as assigned by ATC, expect filed altitude/flight level 10 minutes after departure.

LAKELAND TRANSITION (CSHEL6.LAL)
ORLANDO TRANSITION (CSHEL6.ORL)

CSHEL SIX DEPARTURE (RNAV)