

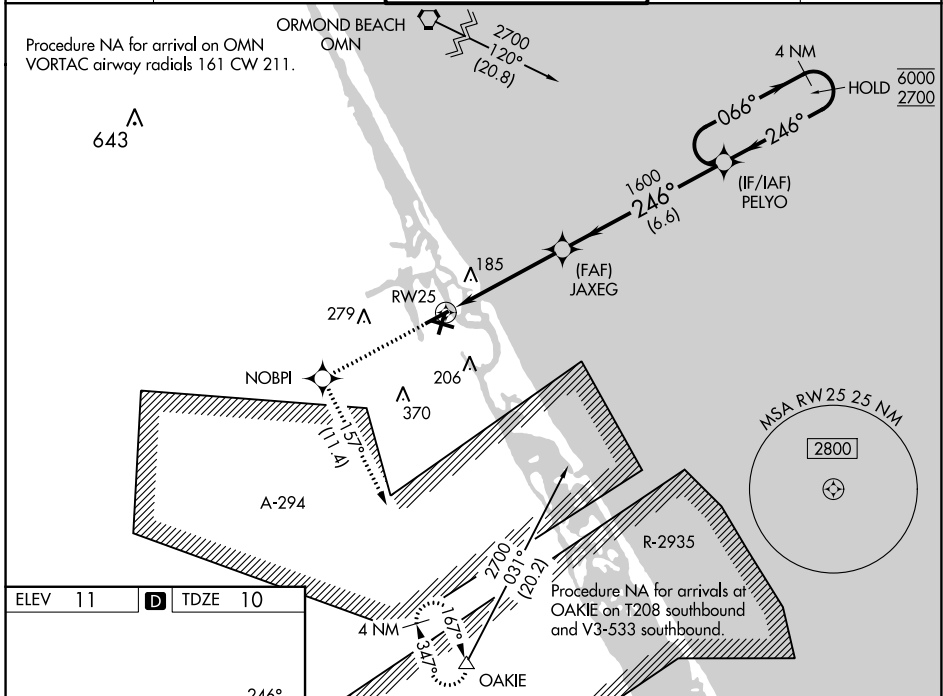
WAAS CH <b>50500</b> <b>W25A</b>	APP CRS <b>246°</b>	Rwy Idg <b>4463</b> TDZE <b>10</b> Apt Elev <b>11</b>
--	------------------------	---

# RNAV (GPS) RWY 25

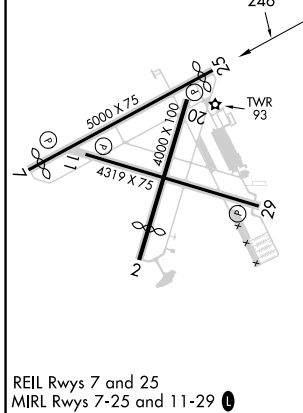
NEW SMYRNA BEACH MUNI (EVB)

RNP APCH-GPS.	<p>▼ Rwy 25 helicopter visibility reduction below 1 SM NA. Straight-in Rwy 25 NA at night, Circling Rwy 7, 11, 25 NA at night. When local altimeter setting not received, use Daytona Beach altimeter setting increase LPV DA to 328 feet and all MDA 40 feet. Increase LNAV Cat C visibility ½ SM and Circling Cat C visibility ¼ SM.</p>	MISSED APPROACH: Climb to 4000 direct NOBPI and on track 1.57° to OAKIE and hold, continue climb-in-hold to 4000.
---------------	--	---

ATIS <b>124.625</b>	DAYTONA APP CON <b>125.35 322.3</b>	NEW SMYRNA BEACH TOWER* <b>119.675 (CTAF) 0</b>	GND CON <b>121.325</b>	UNICOM <b>122.95</b>
------------------------	--	--	---------------------------	-------------------------



ELEV 11	D	TDZE 10
---------	---	---------



REIL Rws 7 and 25  
MIRL Rws 7-25 and 11-29 0

CATEGORY	A	B	C	D
LPV DA	303-1 293 (300-1)			NA
LNAV MDA	440-1	430 (500-1)	440-1¼ 430 (500-1¼)	NA
CIRCLING	440-1 429 (500-1)	520-1 509 (600-1)	680-1¾ 669 (700-1¾)	NA

SE-3, 13 JUN 2024 to 11 JUL 2024

SE-3, 13 JUN 2024 to 11 JUL 2024