

WAAS CH <b>97700</b> <b>W29A</b>	APP CRS <b>291°</b>	Rwy Idg TDZE <b>11</b> Apt Elev <b>11</b>	<b>4319</b>
----------------------------------------	------------------------	-------------------------------------------------	-------------

# RNAV (GPS) RWY 29

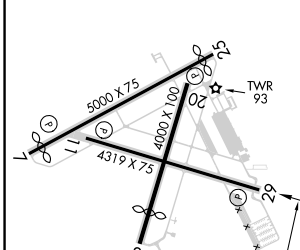
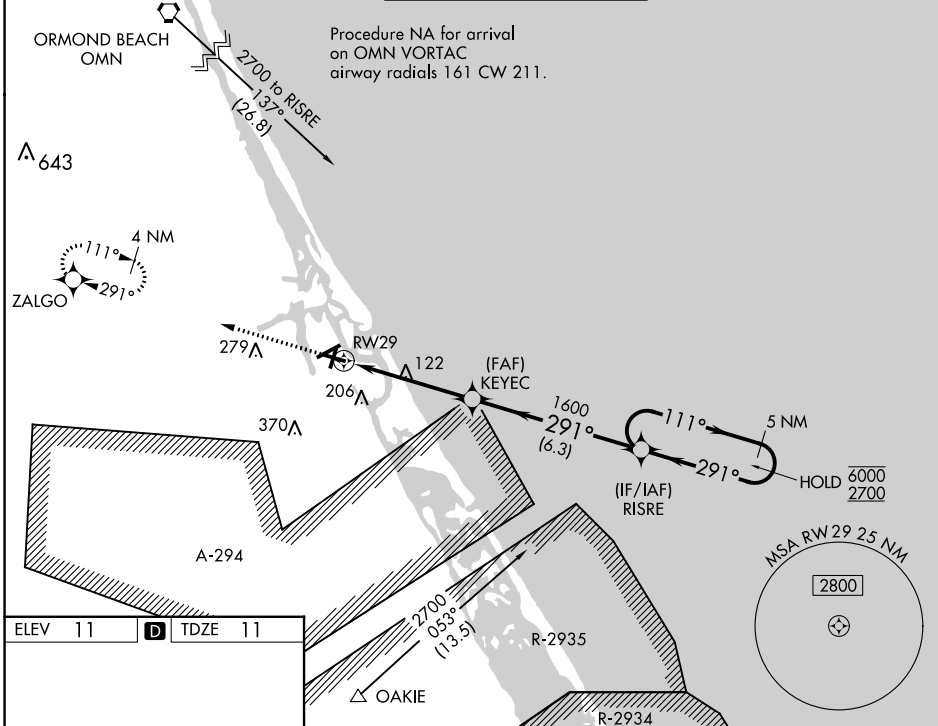
NEW SMYRNA BEACH MUNI (EVB)

RNP APCH-GPS.

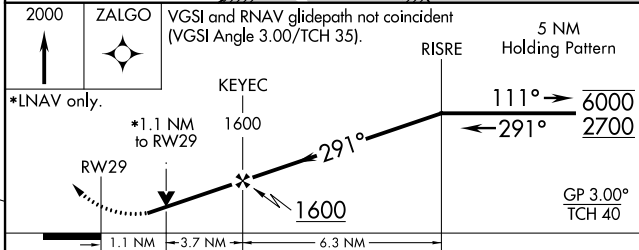
▼ Rwy 29 helicopter visibility reduction below 3/4 SM NA. VDP NA when using Daytona Beach altimeter setting. Circling Rwy 7, 11, 25 NA at night. When local altimeter setting not received, use Daytona Beach altimeter setting increase LPV DA to 333 feet and all visibilities 1/8 SM. Increase all MDAs 40 feet, LNAV Cat C/D visibility 1/8 SM, and Circling Cats C/D visibility 1/4 SM.

MISSED APPROACH: Climb to 2000 direct ZALGO and hold.

ATIS <b>124.625</b>	DAYTONA APP CON <b>125.35 322.3</b>	NEW SMYRNA BEACH TOWER ★ <b>119.675 (CTAF) 0</b>	GND CON <b>121.325</b>	UNICOM <b>122.95</b>
------------------------	----------------------------------------	-----------------------------------------------------	---------------------------	-------------------------



ELEV 11	<b>D</b>	TDZE 11
---------	----------	---------



2000	ZALGO	VGSi and RNAV glidepath not coincident (VGSi Angle 3.00/TCH 35).		5 NM Holding Pattern
*LNAV only.	KEYEC	1600	111° → 6000	← 291° 2700
	RWY 29	1600	GP 3.00° TCH 40	
	1.1 NM	3.7 NM	6.3 NM	
CATEGORY	A	B	C	D
LPV DA	308-7/8		297 (300-7/8)	
LNAV MDA	380-1		369 (400-1)	
<b>C</b> CIRCLING	440-1 429 (500-1)	520-1 509 (600-1)	680-1 3/4 669 (700-1 3/4)	680-2 669 (700-2)

SE-3, 13 JUN 2024 to 11 JUL 2024

SE-3, 13 JUN 2024 to 11 JUL 2024