

FTHLS SIX DEPARTURE (RNAV)

AL-6494 (FAA)

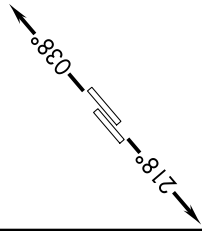
CHANDLER MUNI (CHD)
CHANDLER, ARIZONA

SW-4, 13 JUN 2024 to 11 JUL 2024

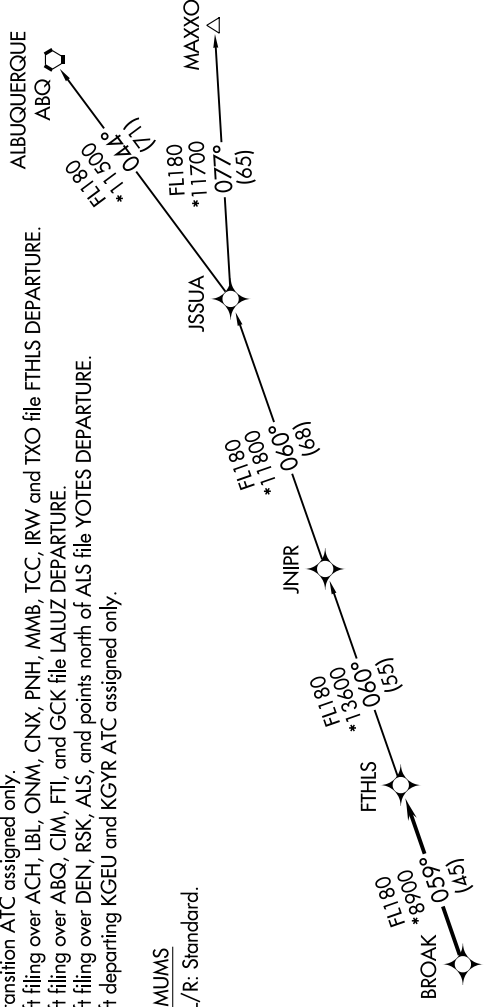
ATIS
128.325
GND CON
124.4
CHANDLER TOWER *
126.1 (Rwy 4L-22R)
133.1 (Rwy 4R-22L)
PHOENIX DEP CON
123.7 363.0

NOTE: RNAV 1.
NOTE: Turboprops and turboprops only.
NOTE: RADAR required.
NOTE: GPS required.
NOTE: ABQ transition ATC assigned only.
NOTE: Aircraft filing over ACH, LBL, ONM, CNX, PNH, MMB, TCC, IRW and TXO file FTHLS DEPARTURE.
NOTE: Aircraft filing over ABQ, CIM, FTI, and GCK file LALUZ DEPARTURE.
NOTE: Aircraft filing over DEN, RSK, ALS, and points north of ALS file YOTES DEPARTURE.
NOTE: Aircraft departing KGEU and KGYR ATC assigned only.

TAKEOFF MINIMUMS
Rwys 4L/R, 22L/R: Standard.



TOP ALTITUDE: ASSIGNED BY ATC



DEPARTURE ROUTE DESCRIPTION

TAKEOFF RUNWAYS 4L/R: Climb heading 038° or as assigned by ATC. Thence. . . .
 TAKEOFF RUNWAYS 22L/R: Climb heading 218° or as assigned by ATC. Thence. . . .
 . . . expect RADAR vectors to BROAK, then on track 059° to FTHLS, then on (transition).
 Maintain ATC assigned altitude, expect filed altitude 3 minutes after departure.

- ALBUQUERQUE TRANSITION (FTHLS6.ABQ)
- JNIPR TRANSITION (FTHLS6.JNIPR)
- MAXXO TRANSITION (FTHLS6.MAXXO)

NOTE: Chart not to scale.

FTHLS SIX DEPARTURE (RNAV)

SW-4, 13 JUN 2024 to 11 JUL 2024