

WAAS CH <b>97519</b>	APP CRS <b>174°</b>	Rwy Idg TDZE Apt Elev	<b>3501</b> <b>1030</b> <b>1030</b>
<b>W17A</b>			

# RNAV (GPS) RWY 17

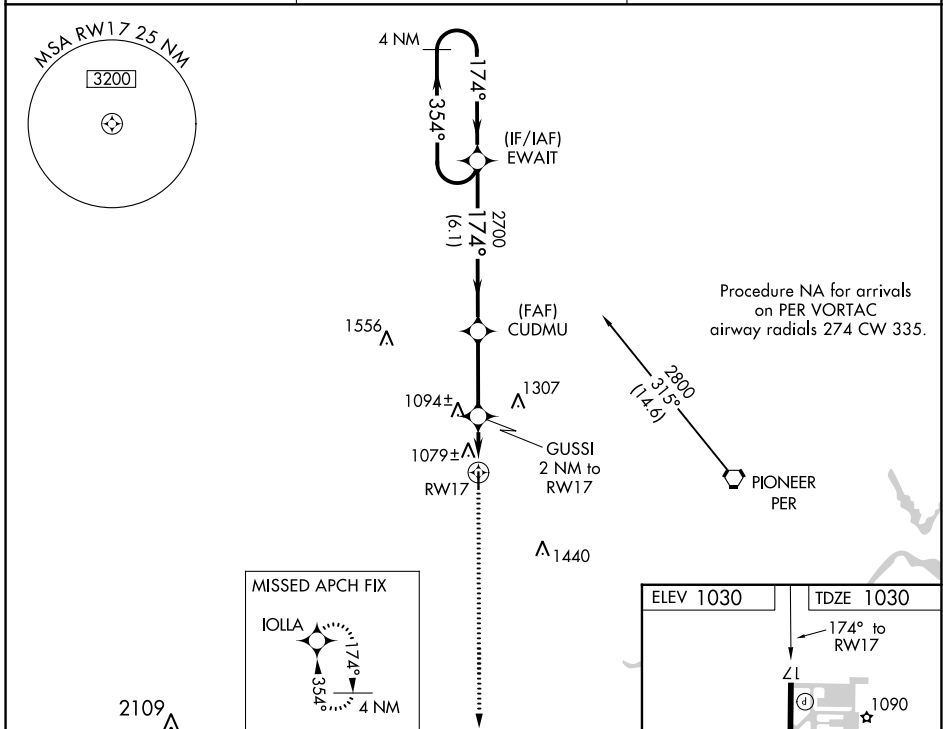
BLACKWELL-TONKAWA MUNI (BKN)

RNP APCH.

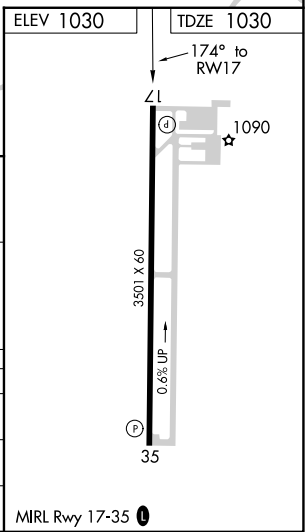
**⚠** For uncompensated Baro-VNAV systems, LNAV/VNAV NA below -17°C or above 54°C. Rwy 17 helicopter visibility reduction below 3/4 SM NA. When local altimeter setting not received, use Ponca City altimeter setting and increase all DA 31 feet and all MDA 40 feet and LNAV Cat C visibility 1/4 mile. Baro-VNAV NA when using Ponca City altimeter setting.

MISSED APPROACH: Climb to 2800 direct IOLLA and hold.

AWOS-3PT <b>120.575</b>	KANSAS CITY CENTER <b>127.8 319.1</b>	UNICOM <b>122.8 (CTAF) 0</b>
----------------------------	--	---------------------------------



4 NM Holding Pattern		EWAIT		2800 IOLLA	
2800 ← 354°		174° →		*LNNAV only	
GP 3.00° TCH 40		2700		RWY 17	
6.1 NM		3.1 NM		2 NM	
CATEGORY	A	B	C	D	
LPV DA	1280-1	250 (300-1)		NA	
LNNAV/VNAV DA	1376-1 1/4	346 (400-1 1/4)		NA	
LNNAV MDA	1400-1	370 (400-1)		NA	



SC-1, 13 JUN 2024 to 11 JUL 2024

SC-1, 13 JUN 2024 to 11 JUL 2024