

VORTAC MQP 117.7 Chan 124	APP CRS 077°	Rwy Idg TDZE Apt Elev	N/A N/A 991
---	------------------------	-----------------------------	--

VOR/DME-A

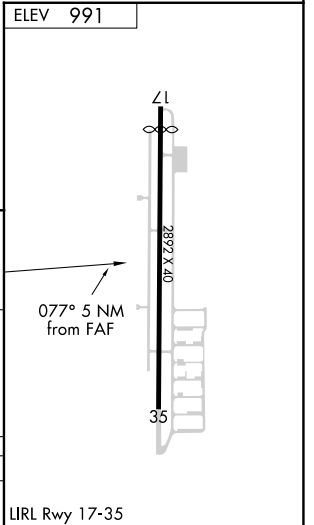
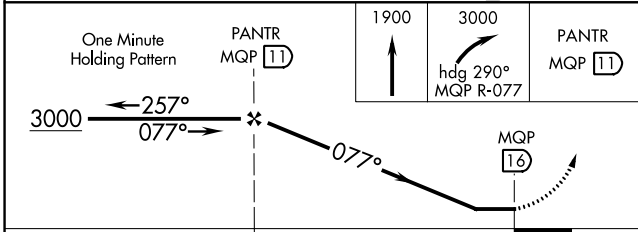
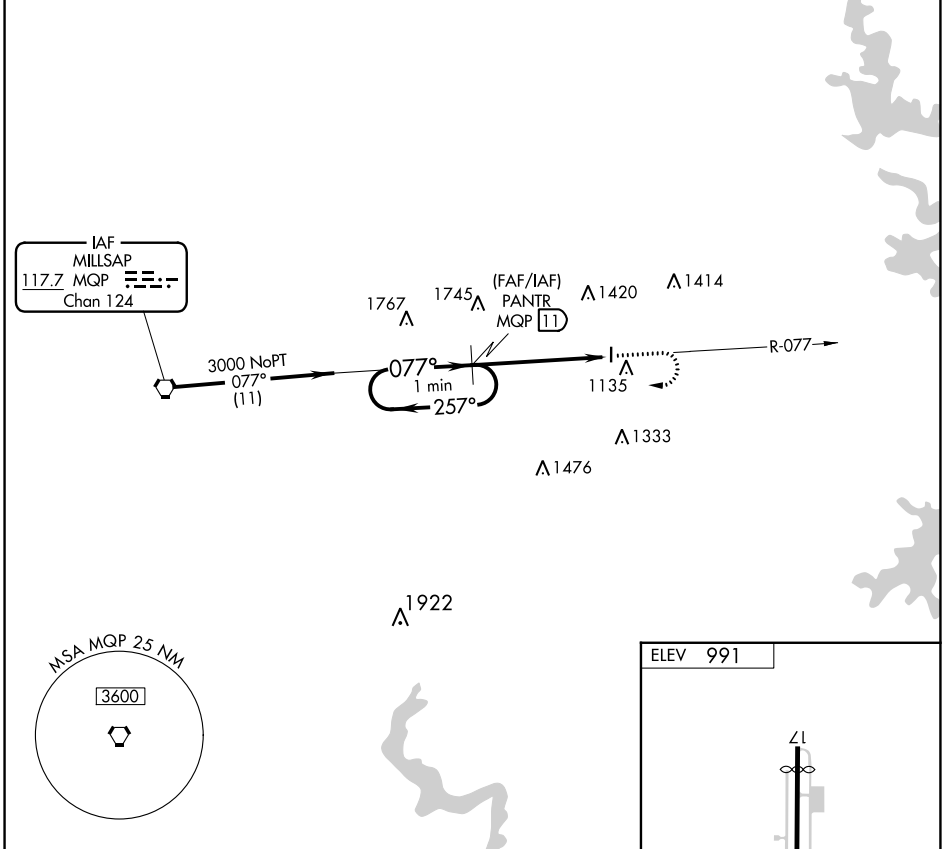
PARKER COUNTY (WEA)

NA Use Fort Worth Meacham altimeter setting.

MISSED APPROACH: Climb to 1900 then climbing right turn to 3000 via heading 290° and MQP R-077 to PANTR and hold.

REGIONAL APP CON **135.975 379.9**

UNICOM **122.7 (CTAF)**



CATEGORY	A	B	C	D
CIRCLING	1680-1	689 (700-1)	1860-2½ 869 (900-2½)	NA

SC-2, 13 JUN 2024 to 11 JUL 2024

SC-2, 13 JUN 2024 to 11 JUL 2024