

GIDDINGS, TEXAS

AL-6499 (FAA)

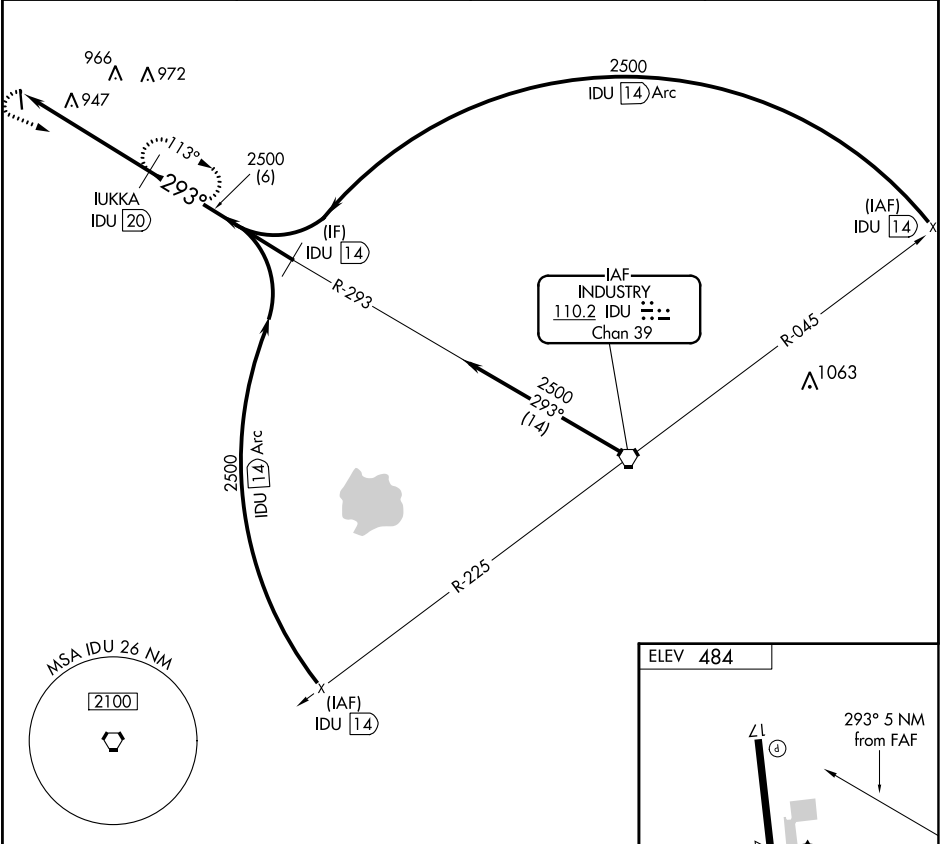
22027

VORTAC IDU 110.2 Chan 39	APP CRS 293°	Rwy Idg TDZE Apt Elev	N/A N/A 484
--	------------------------	-----------------------------	--------------------------

VOR/DME-A
GIDDINGS-LEE COUNTY (GYB)

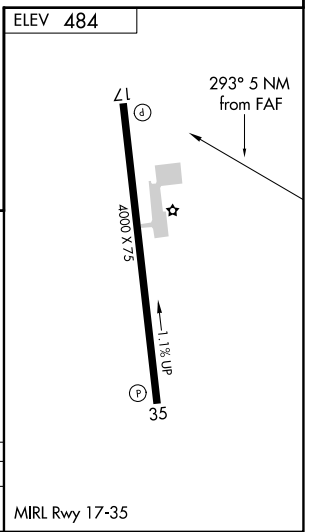
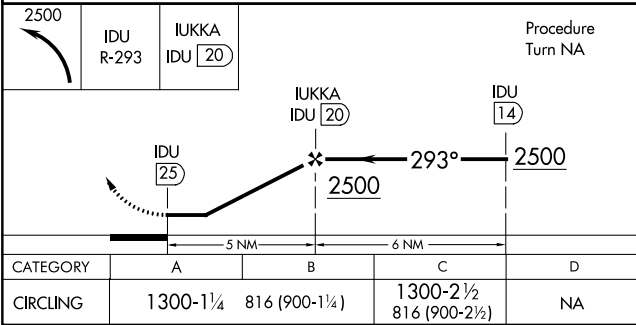
⚠ Procedure NA at night. Helicopter visibility reduction below 1 SM NA. Use Austin-Bergstrom altimeter setting. MISSED APPROACH: Climbing left turn to 2500 via IDU R-293 to IUKKA 20 DME and hold.

AWOS-3 119.225	AUSTIN APP CON 127.225 317.65	UNICOM 123.05 (CTAF)
--------------------------	---	--------------------------------



SC-5, 13 JUN 2024 to 11 JUL 2024

SC-5, 13 JUN 2024 to 11 JUL 2024



GIDDINGS, TEXAS
Amdt 3B 27JAN22

30°10'N-96°59'W

GIDDINGS-LEE COUNTY (GYB)
VOR/DME-A