

WAAS CH 50543 W31B	APP CRS 295°	Rwy Idg TDZE Apt Elev	5000 957 963
--	------------------------	-----------------------------	---

RNAV (GPS) Z RWY 31

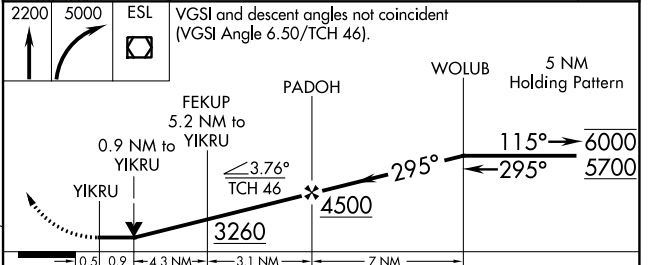
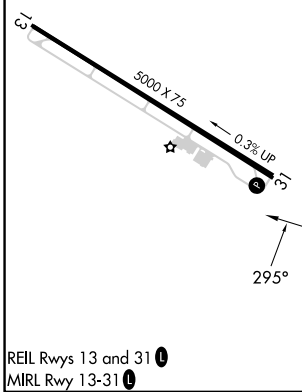
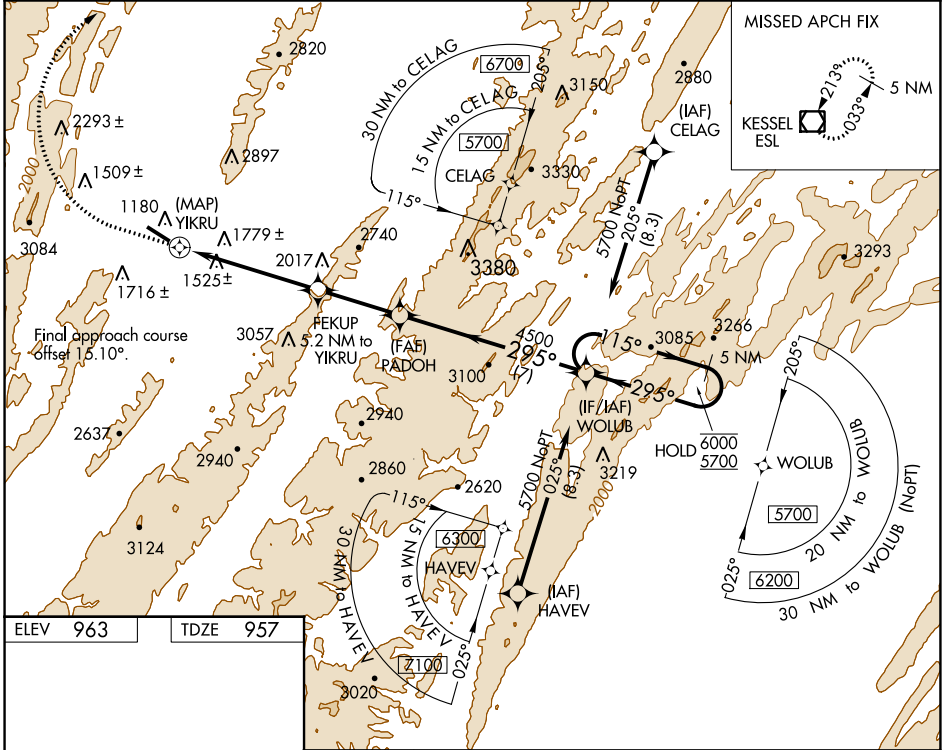
GRANT COUNTY (W99)

RNP APCH - GPS.

▼ Rwy 31 helicopter visibility reduction below 3/4 SM NA.
▲ When local altimeter setting not received, procedure NA.
☒ -8°C

MISSED APPROACH: Climb to 2200 then climbing right turn to 5000 direct ESL VOR/DME and hold.
 *Missed approach requires minimum climb of 410 feet per NM to 3300, if unable to meet climb gradient, see RNAV (GPS) Y Rwy 31.

AWOS-3 124.475	WASHINGTON CENTER 133.55 322.55	UNICOM 122.8 (CTAF) 0
--------------------------	---	---------------------------------



CATEGORY	A	B	C	D
LP MDA*	2020-1¼ 1063 (1100-1¼)	2020-1½ 1063 (1100-1½)		NA
LNAV MDA*	2120-1¼ 1163 (1200-1¼)	2120-1½ 1163 (1200-1½)		NA

NE-4, 13 JUN 2024 to 11 JUL 2024

NE-4, 13 JUN 2024 to 11 JUL 2024