

APP CRS Rwy Idg **3400**
 277° TDZE **1237**
 Apt Elev **1238**

RNAV (GPS) RWY 28

NEILLSVILLE MUNI (VIQ)

RNP APCH.

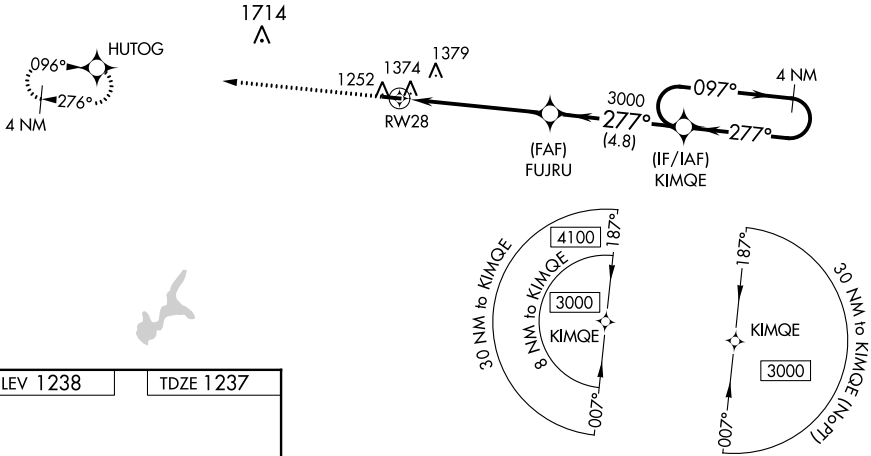
▼ Rwy 28 helicopter visibility reduction below 3/4 SM NA. Use Marshfield altimeter setting; when not received, use Wisconsin Rapids altimeter setting and increase all MDA 80 feet.

MISSED APPROACH:
 Climb to 3000 direct
 HUTOG and hold.

MFI ASOS
121.575

MINNEAPOLIS CENTER
124.4 317.7

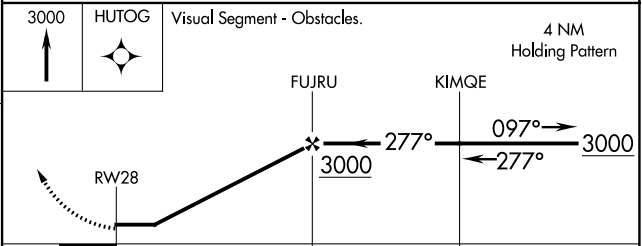
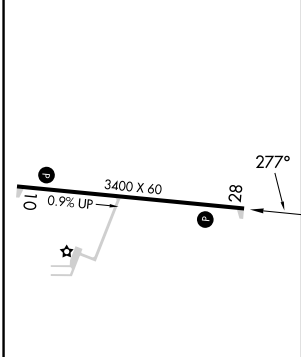
UNICOM
122.8 (CTAF)



EC-3, 13 JUN 2024 to 11 JUL 2024

EC-3, 13 JUN 2024 to 11 JUL 2024

ELEV 1238 TDZE 1237



| CATEGORY | A | B | C | D |
|----------|--------|-------------|---|----|
| LNAV MDA | 1680-1 | 443 (500-1) | | NA |
| CIRCLING | 1720-1 | 482 (500-1) | | NA |

LURL Rwy 10-28