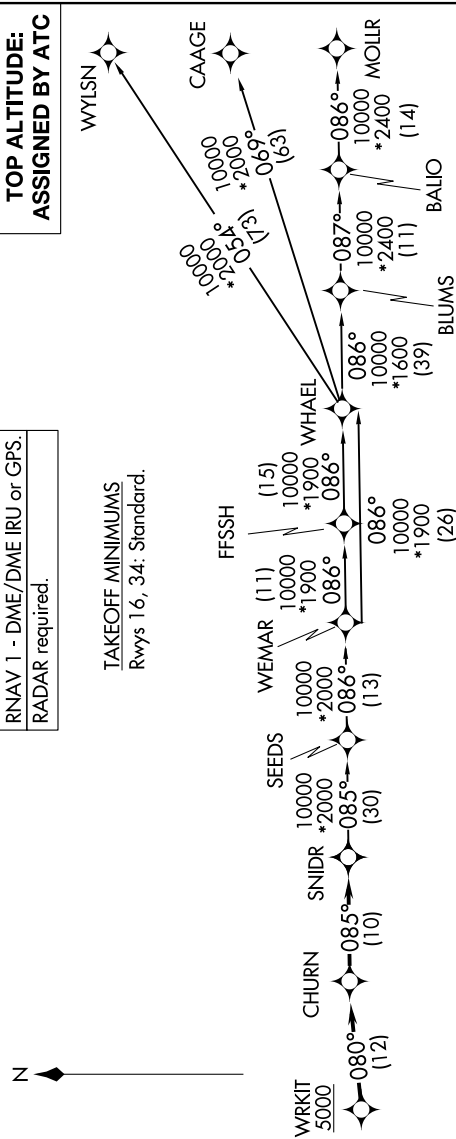


SC-3, 13 JUN 2024 to 11 JUL 2024

SAN ANTONIO DEP CON
118.05 353.5

RNAV 1 - DME/DME IRU or GPS.
RADAR required.

TOP ALTITUDE:
ASSIGNED BY ATC



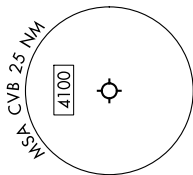
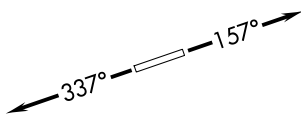
DEPARTURE ROUTE DESCRIPTION

TAKEOFF RUNWAY 16: Climb on heading 157° or as assigned by ATC, for vectors to WRKIT, thence

TAKEOFF RUNWAY 34: Climb on heading 337° or as assigned by ATC, for vectors to WRKIT, thence

. . . . on track 080° to CHURN, then on track 085° to SNIDR, then on transition.
Maintain ATC assigned altitude.

- BLUMS TRANSITION (SNIDR1.BLUMS)
- CAAGE TRANSITION (SNIDR1.CAAGE)
- FFSSH TRANSITION (SNIDR1.FFSSH)
- MOLLR TRANSITION (SNIDR1.MOLLR)
- SEEDS TRANSITION (SNIDR1.SEEDS)
- WEMAR TRANSITION (SNIDR1.WEMAR)
- WHAEL TRANSITION (SNIDR1.WHAEL)
- WYLSN TRANSITION (SNIDR1.WYLSN)



Note: Chart not to scale.

SC-3, 13 JUN 2024 to 11 JUL 2024