

VORTAC LNK <b>116.1</b> Chan <b>108</b>	APP CRS <b>196°</b>	Rwy Idg <b>4201</b> TDZE <b>1500</b> Apt Elev <b>1500</b>
---	------------------------	---

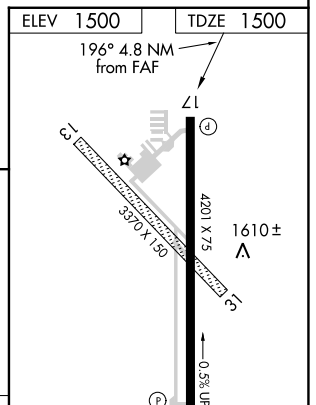
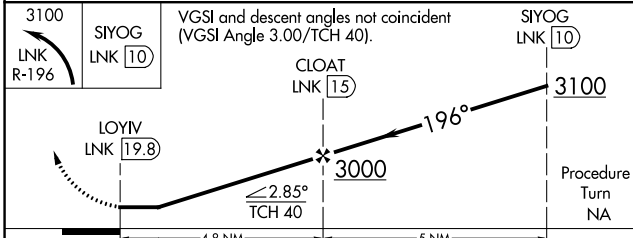
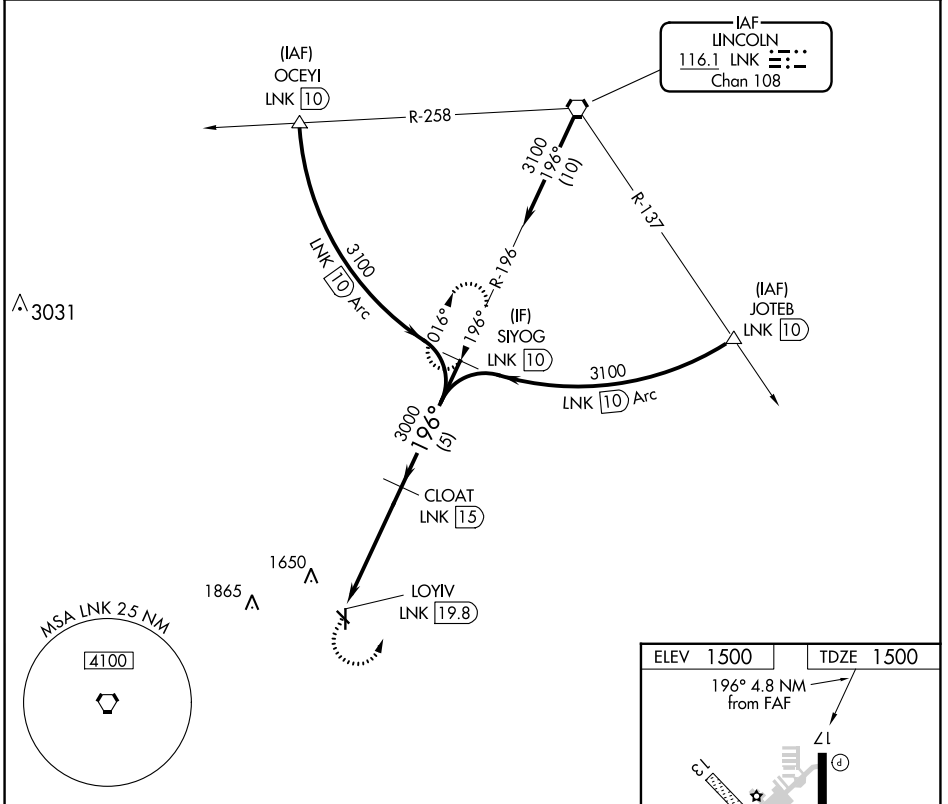
# VOR/DME RWY 17

CRETE MUNI (CEK)

**⚠ NA** Rwy 17 Straight-in and Circling minimums NA at night. Use Lincoln altimeter setting; when not received, use Beatrice altimeter setting. Helicopter visibility reduction below 1 SM NA.

MISSED APPROACH: Climbing left turn to 3100 via LNK VORTAC R-196 to SIYOG/10 DME and hold.

OMAHA APP CON <b>124.0 270.3</b>	UNICOM <b>122.8 (CTAF)</b>
-------------------------------------	-------------------------------



CATEGORY	A	B	C	D
S-17	2080-1	580 (600-1)		NA
CIRCLING	2140-1	640 (700-1)		NA

HIRL Rwy 17-35  
REIL Rwy 17 and 35

NC-2, 13 JUN 2024 to 11 JUL 2024

NC-2, 13 JUN 2024 to 11 JUL 2024