

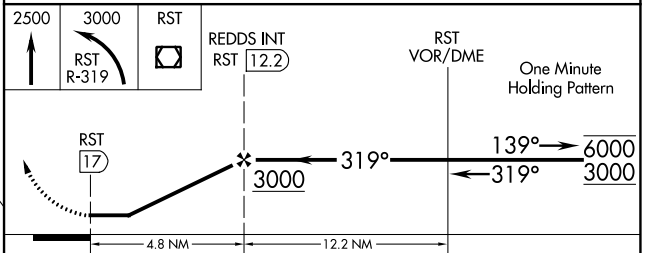
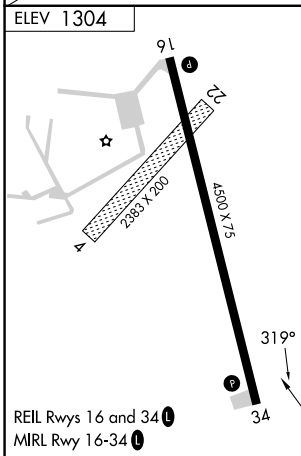
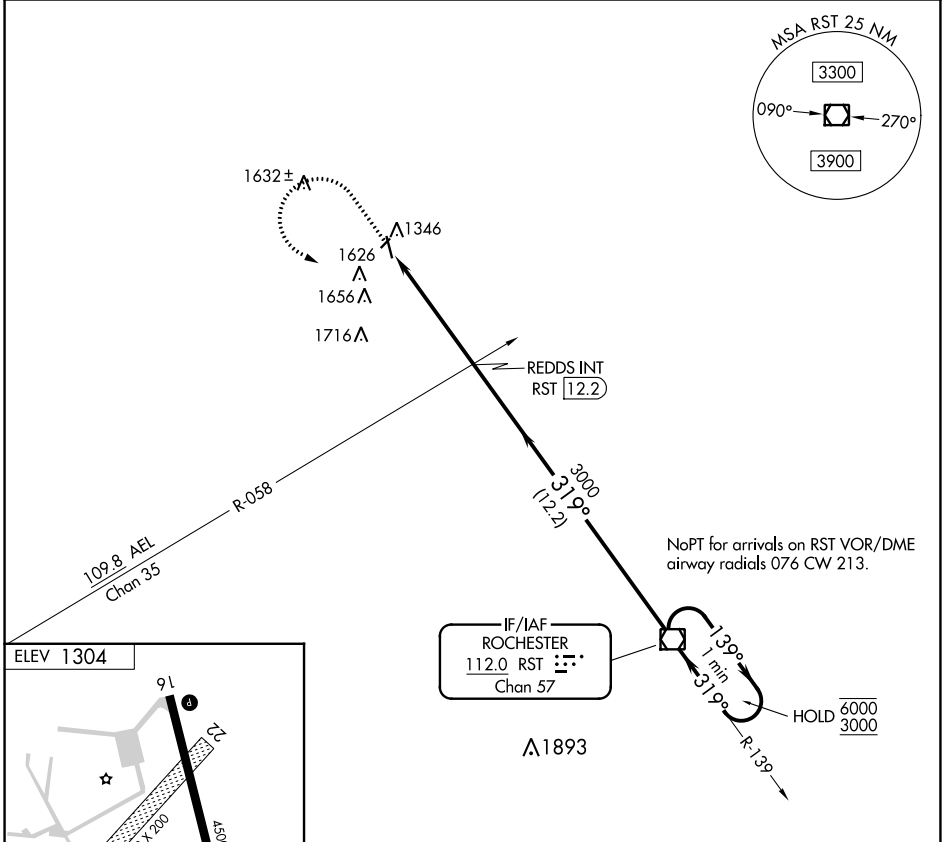
VOR/DME RST <b>112.0</b> Chan <b>57</b>	APP CRS <b>319°</b>	Rwy Idg TDZE Apt Elev <b>N/A</b> <b>N/A</b> <b>1304</b>
---	------------------------	--

**VOR-A**  
DODGE CENTER (TOB)

**⚠** Circling NA to Rwy 4 and 22. When local altimeter setting not received, use Rochester altimeter setting and increase all MDAs 60 feet and visibility Cat C ¼ SM.

MISSED APPROACH: Climb to 2500 then climbing left turn to 3000 on RST VOR/DME R-319 to RST VOR/DME and hold.

AWOS-3 <b>119.075</b>	ROCHESTER APP CON * <b>119.8 251.125</b>	CTAF <b>122.9</b>
--------------------------	---	----------------------



FAF to MAP 4.8 NM						
Knots	60	90	120	150	180	
Min:Sec	4:48	3:12	2:24	1:55	1:36	
CATEGORY	A		B		C	D
CIRCLING	1960-1		656 (700-1)		1960-1¾ 656 (700-1¾)	NA

NC-1, 13 JUN 2024 to 11 JUL 2024

NC-1, 13 JUN 2024 to 11 JUL 2024