

WAAS CH 99540 W36A	APP CRS 360°	Rwy Idg TDZE 968 Apt Elev 968	3200 968 968
----------------------------------------	------------------------	---------------------------------------------------	-----------------------------------------

RNAV (GPS) RWY 36

BUFFALO MUNI (CFE)

▼ For uncompensated Baro-VNAV systems, LNAV/VNAV NA below -16°C (4°F) or above 54°C (130°F). Circling Rwy 18 NA at night. Rwy 36 helicopter visibility reduction below ¾ SM NA. DME/DME RNP-0.3 NA.

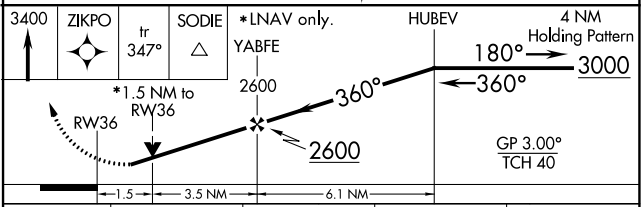
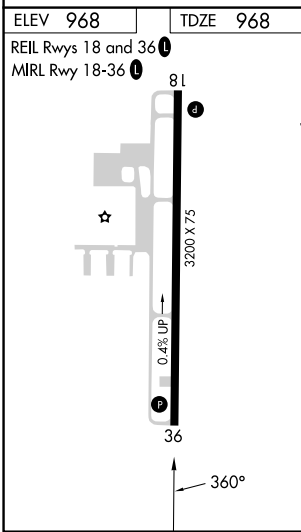
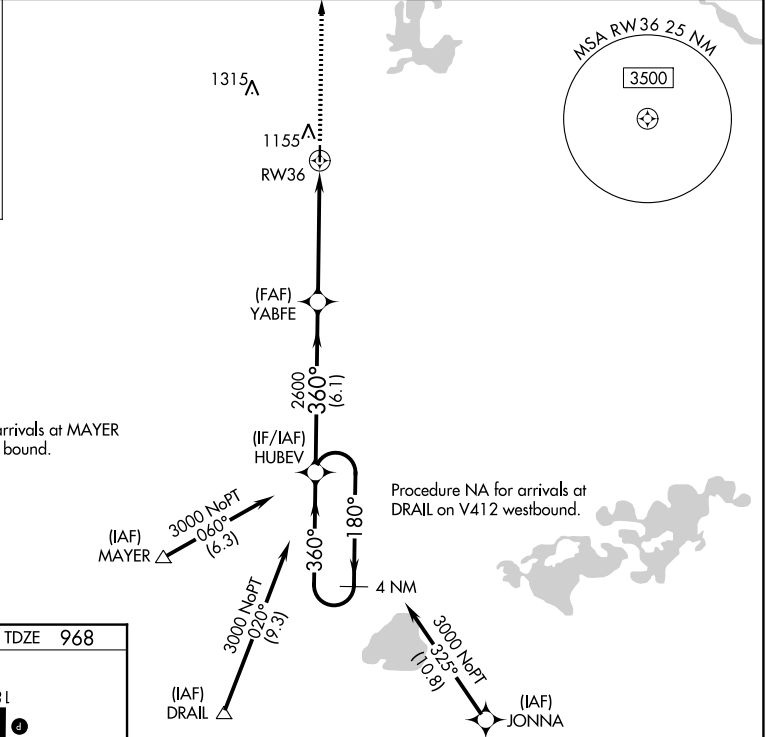
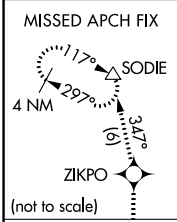
MISSED APPROACH: Climb to 3400 direct ZIKPO and track 347° to SODIE and hold.

AWOS-3PT
120.45

MINNEAPOLIS APP CON
126.5 335.65

GCO
121.725

UNICOM
122.8 (CTAF) **1**



CATEGORY	A	B	C	D
LPV DA	1280-1 1/8	312 (400-1 1/8)		NA
LNAV/VNAV DA	1396-1 1/2	428 (500-1 1/2)		NA
LNAV MDA	1460-1	492 (500-1)	1460-1 3/8 492 (500-1 3/8)	NA
C CIRCLING	1460-1	492 (500-1)	1540-1 1/2 572 (600-1 1/2)	NA

NC-1, 13 JUN 2024 to 11 JUL 2024

NC-1, 13 JUN 2024 to 11 JUL 2024