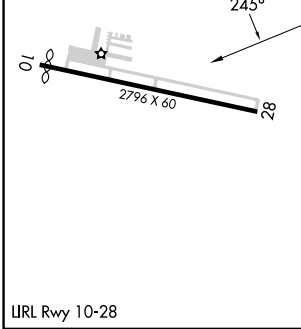
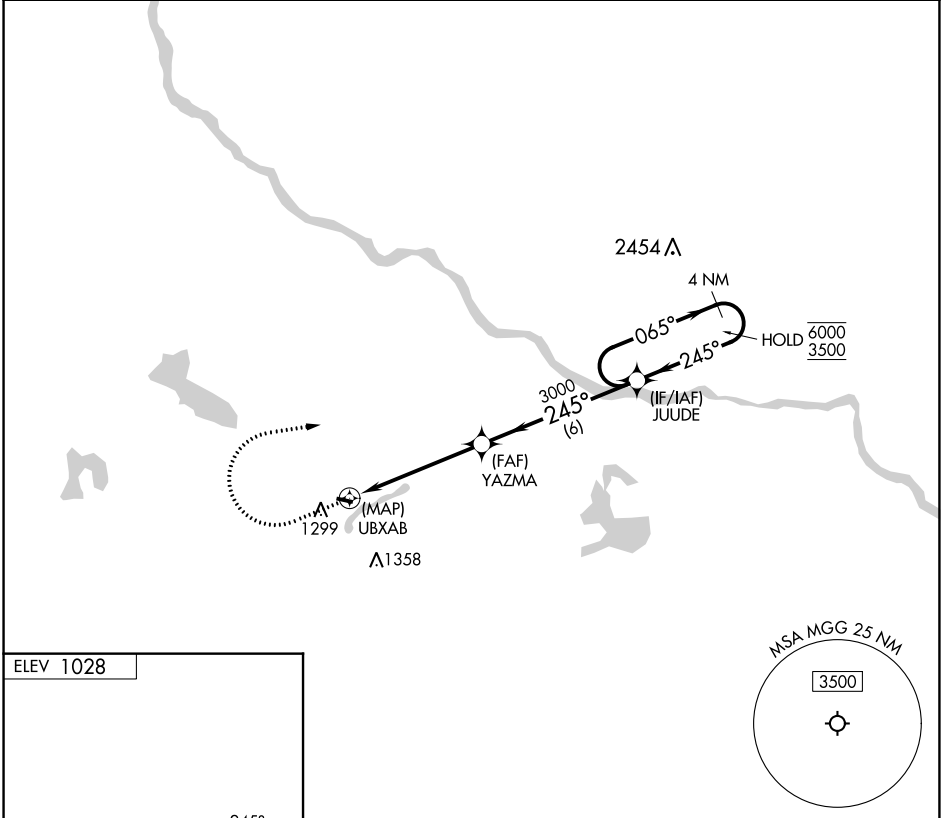


APP CRS	Rwy Idg	N/A
245°	TDZE	N/A
	Apt Elev	1028

RNAV (GPS)-A

MAPLE LAKE MUNI-BILL MAVENCAMP SR FLD (MGG)

RNP APCH - GPS.		MISSED APPROACH: Climb to 2000 then climbing right turn to 3500 direct JUUDE and hold.
<p>⚠ Procedure NA at night. Rwy 10 and 28 helicopter visibility reduction below 1 SM NA. When local altimeter setting not received, use Buffalo altimeter setting and increase all MDAs 40 feet.</p>		
AWOS-3 128.325	MINNEAPOLIS APP CON 126.5 335.65	UNICOM 122.8 (CTAF)



2000	3500	JUUDE	
↑	↷	✧	
UBXBAB		YAZMA	JUUDE
5.1 NM		6 NM	4 NM Holding Pattern
		245°	065° → 6000 ← 245° 3500
CATEGORY	A	B	C
CIRCLING	1660-1	632 (700-1)	1720-2 692 (700-2)
			NA

NC-1, 13 JUN 2024 to 11 JUL 2024

NC-1, 13 JUN 2024 to 11 JUL 2024