

APP CRS 192°	Rwy Idg 3304
	TDZE 41
	Apt Elev 41

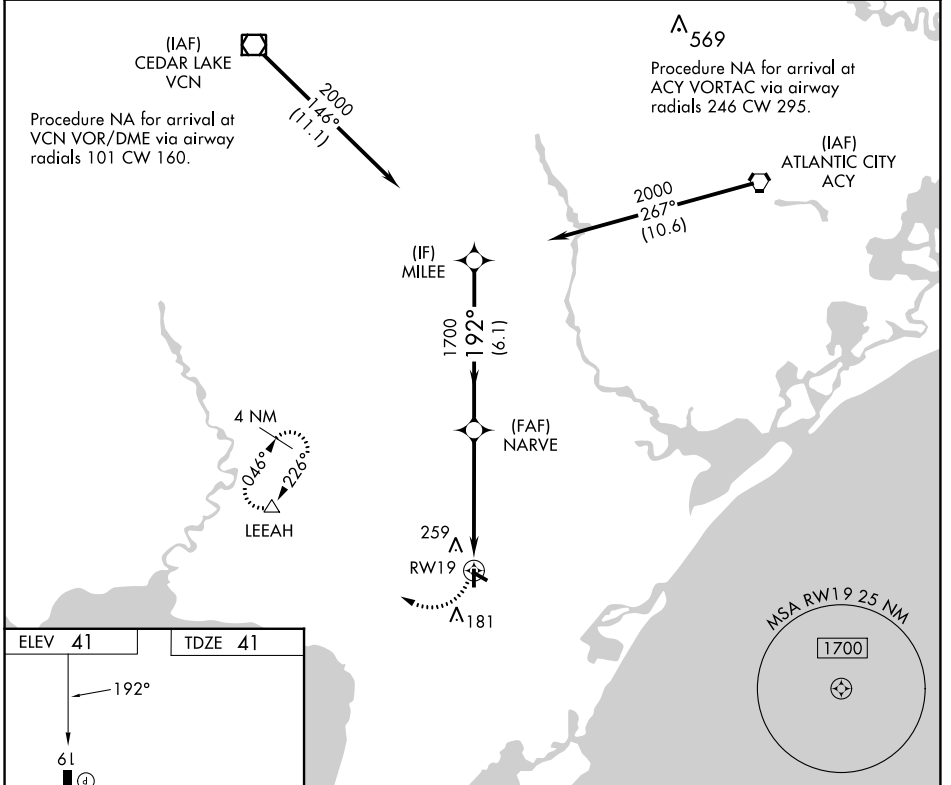
RNAV (GPS) RWY 19

WOODBINE MUNI (OBI)

NA Rwy 19 Straight-in and Circling and Circling to Rwy 13, 31 NA at night. Rwy 13, 19, 31 helicopter visibility reduction below 1 SM NA. DME/DME RNP-0.3 NA. When local altimeter setting not received, use Millville Muni altimeter setting; increase all MDA 60 feet, and increase LNAV Cat C visibility ¼ mile.

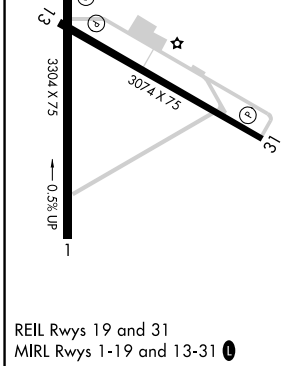
MISSED APPROACH: Climbing right turn to 2000 direct LEEAH and hold.

AWOS-3 120.475	ATLANTIC CITY APP CON 124.6 327.125	GCO 121.725	UNICOM 123.05 (CTAF) 0
--------------------------	---	-----------------------	----------------------------------



NE-2, 13 JUN 2024 to 11 JUL 2024

NE-2, 13 JUN 2024 to 11 JUL 2024



2000	LEEAH	Visual Segment - Obstacles.	MILEE	
	△			
		NARVE	2000	
		RWY 19	1700	
		5 NM	6.1 NM	
CATEGORY	A	B	C	D
LNAV MDA	500-1	459 (500-1)	500-1¼ 459 (500-1¼)	NA
CIRCLING	620-1	579 (600-1)	620-1½ 579 (600-1½)	NA