

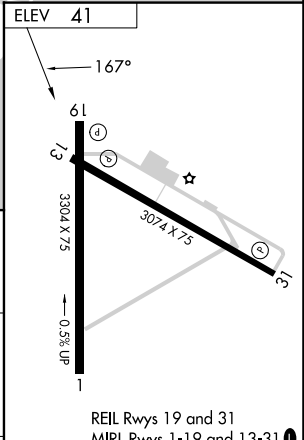
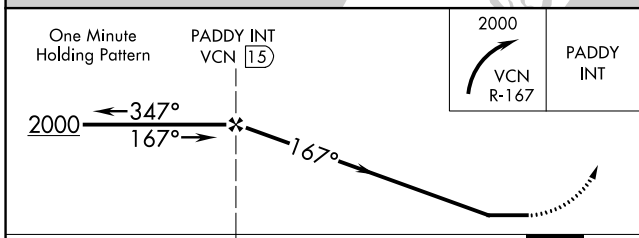
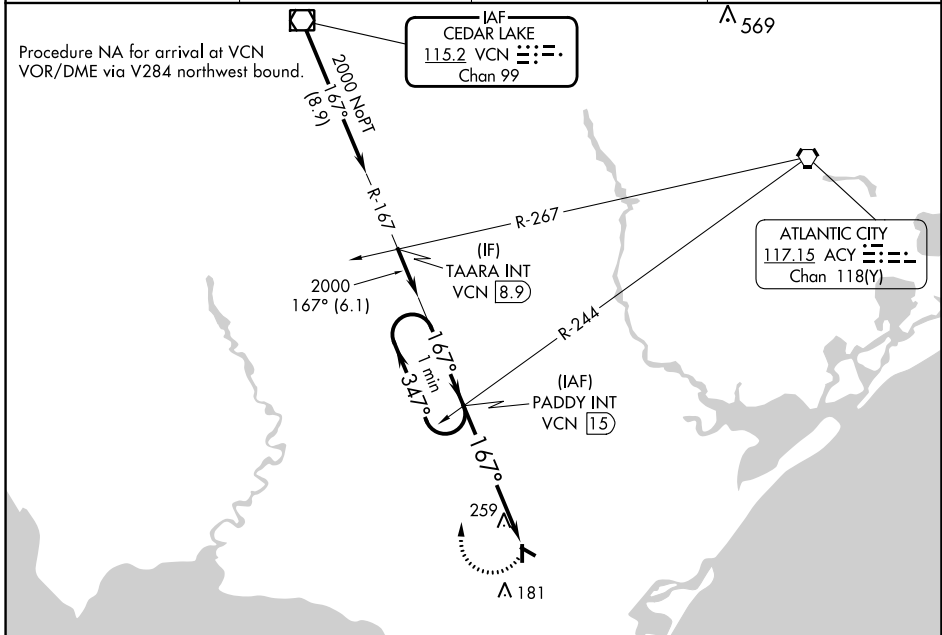
VOR/DME VCN <b>115.2</b> Chan <b>99</b>	APP CRS <b>167°</b>	Rwy Idg TDZE Apt Elev	<b>N/A</b> <b>N/A</b> <b>41</b>
---	------------------------	-----------------------------	---------------------------------------

**VOR-A**  
WOODBINE MUNI (OBI)

**NA** Circling Rwy 13, 19, 31 NA at night. Rwy 13, 19, 31 helicopter visibility reduction below 1 SM NA. When local altimeter setting not received, use Millville Muni altimeter setting; increase all MDA 60 feet and Cat C visibility 1/4 mile.

**MISSED APPROACH:** Climbing right turn to 2000 on VCN VOR/DME R-167 to PADDY INT/VCN 15 DME and hold.

AWOS-3 <b>120.475</b>	ATLANTIC CITY APP CON <b>124.6 327.125</b>	GCO <b>121.725</b>	UNICOM <b>123.05 (CTAF)</b>
--------------------------	---	-----------------------	--------------------------------



CATEGORY	A	B	C	D	FAF to MAP 5.4 NM					
CIRCLING	620-1 579 (600-1)	620-1 1/4 579 (600-1 1/4)	620-1 1/2 579 (600-1 1/2)	NA	Knots	60	90	120	150	180
					Min:Sec	5:24	3:36	2:42	2:10	1:48

NE-2, 13 JUN 2024 to 11 JUL 2024

NE-2, 13 JUN 2024 to 11 JUL 2024